

SK Suomen Kulutusosa

PRODUCT CATALOGUE 2024

**Wear parts for crushing and screening,
earthmoving and road maintenance.**



Sales +358 10 219 6820 suomenkulutusosa.fi



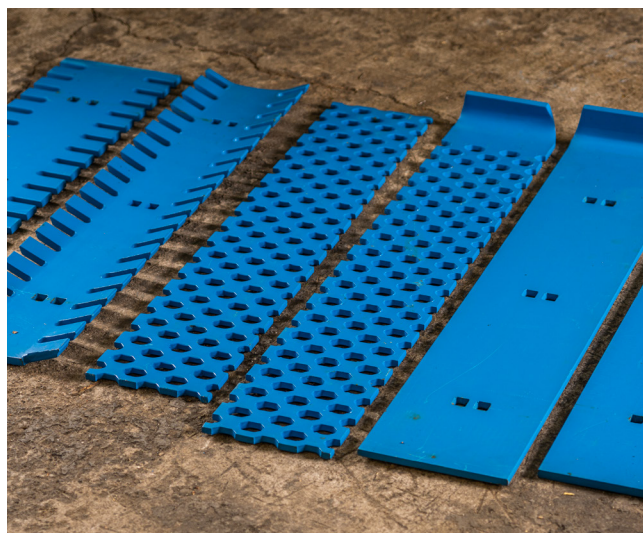
CRUSHING AND SCREENING p. 4



BUCKET WEAR PARTS p. 62



**ABRASION RESISTANT STEEL AND EXTRA
HIGH STRENGTH STRUCTURAL STEEL p. 70**



ROAD MAINTENANCE PRODUCTS p. 76

*Carbide products
now at page 61*

CONTACT US

+358 10 219 6820

myynti@suomenkulutusosa.fi

suomenkulutusosa.fi

CONTENTS

Contents	3	Groser bars	68
Crushing and screening	4	Profile edges	68
Wear parts for crushers	5	Bolt-fastened brush edges	68
Jaw crushers	5	Abrasion resistant steel and extra high strength structural steel	69
Cone crushers	23	Abrasion resistant steel	70
Wire screens and equipment	47	Extra high strength structural steel	72
Wire screens	47	Spade Cutting Edges	72
Side clamping bars	50	Flame cutting, drilling, squaring	73
Hook bolts and washers	50	Cutting edge, single bevel	74
Wedgebolts	50	Wear strips 500HB	75
Rubber profiles	51	Road maintenance products	76
Screen tightening hooks	51	Ice scraper BX500	77
Side bar, wear steel	51	Snowplow edges	78
Grizzlebars and grizzle cassettes	52	Flat edges 305mm	78
Feeder plates/vibrating bottom and side plates	52	Flat edges HB500,	
Smooth rollers	53	hole spacing 290mm	78
Smooth rollers, steel	53	Flat edges HB500, hole spacing 290mm	79
Ringrollers, rubber	54	Flat edges HB500, hole spacing 200mm	79
Disc rollers, rubber	54	Zoom Flat edges	79
Smooth girland rollers, steel	55	Ice scrapers	80
Smooth girland rollers, rubber	55	Carbide edges, pins and frames	81
Impact bars	56	Carbide plate for pins	81
Guide roller, hourglass	56	Flat carbide edges and pins	82
Guide roller, steel	56	Carbide blade with teeth	82
Fastening sets	56	Plowing and fastening equipment	83
Ribrolls	57	Plates for snowplows	83
Dust suppression water spray nozzle	57	Snowplow repair part	83
Bracket bearings and flange	57	Plates for quick mounting 305mm	83
Wear resist.rubber and plank scrapers	58	Bolts and nuts	84
Demolition tools for hammers	59	Wedgebolts, wedges and support plates	85
Carbide products	61		
Bucket wear parts	62		
Teeth and adapters	63		
Shrouds	65		
Adjustment plates	66		
Shim plates	66		
Tolerance rings	66		
Fasteners	67		
Adjustment parts	67		
Weld on brackets	67		
Wheel loader ear brackets	67		
Weld on excavator hook	67		
Wedglock	67		

All catalog imagery is for illustration purposes only. The reference numbers indicate part compatibility and are not a suggestion that the parts are OEM products. The products are offered on a first come, first served basis, and the offering is based on current availability.



CRUSHING AND SCREENING

Stone crushing and screening is demanding work that is hard on the equipment. By using our wide selection of high-quality parts, you can ensure the availability of wear and spare parts for your worksite.

Our selection includes jaw crusher and cone crusher wear parts and spare parts for all stone crushing work. We can also readily supply wire screens cut to size, as well as screening accessories. All the parts and materials we supply are tested, high-quality products.



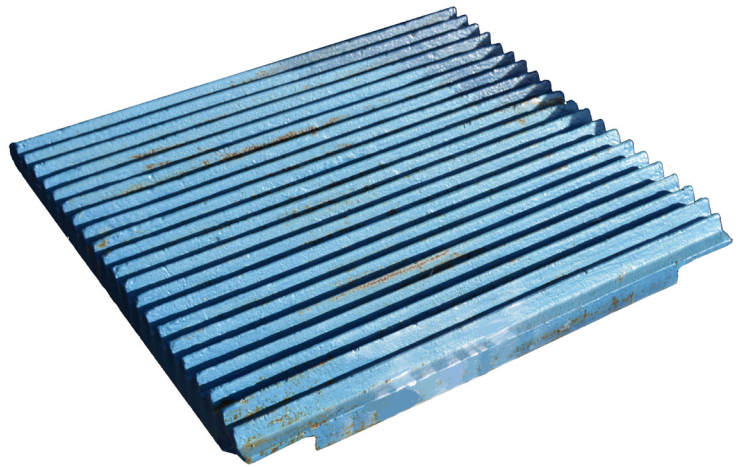
WEAR PARTS FOR CRUSHERS

Jaw crushers

MK50

Parts to suit

PART NUMBER	PRODUCT
104228	upper cheek plate
104227	lower cheek plate
110160	jaw, fixed
110161	jaw, swing



MK63

Parts to suit

PART NUMBER	PRODUCT
104232	upper cheek plate
104231	lower cheek plate
110170	jaw, fixed
110173	jaw, swing



MK90

Parts to suit

PART NUMBER	PRODUCT
104274	upper cheek plate
104273	lower cheek plate
110190	jaw, fixed, quarry
110192	jaw, swing

C80

Parts to suit

PART NUMBER	PRODUCT
104292	upper cheek plate
104290	lower cheek plate
110180	jaw, fixed
110184	jaw, swing

C100

Parts to suit

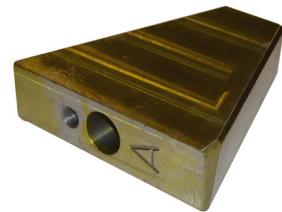
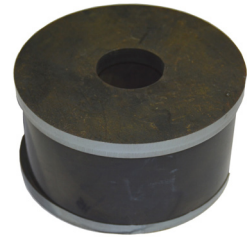
PART NUMBER	PRODUCT
104314	upper cheek plate
104310	lower cheek plate
104320	cheek plate, 1-piece
104500	nut, nylock m30
104510	washer m30
104962	T-head bolt m30
110200	jaw, fixed, quarry
110210	jaw, swing, quarry
110211	jaw, swing, std
118380	tightening wedge, fixed
118384	tightening wedge, swing
118388	tightening wedge, auxiliary wedge
104618	bolt, fixed jaw m36
104630	bolt, fixwd jaw + 70mm ??
104620	bolt, swing jaw 36
104502	nut 36, nylock
104512	washer for m36 nut
104501	nut, m36
104503	nut, m36 "star"
104540	jaw bolt tightening rubber element
111010	toggle plate
111011	toggle seat



C105

Parts to suit

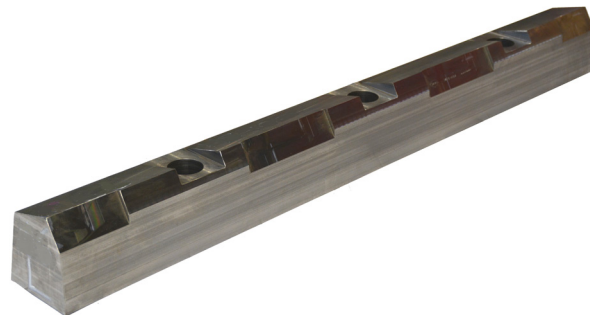
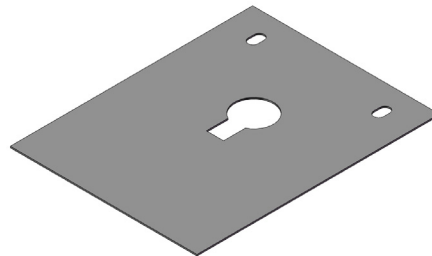
PART NUMBER	PRODUCT
104300	upper cheek plate
104302	lower cheek plate
104298	cheek plate, 1-piece
104498	nut, nylock m24
104963	T-head bolt m24
104971	washer m24
110214	jaw, fixed, quarry
110216	jaw, swing, quarry
118408	tightening wedge, swing
104620	bolt, swing jaw
104512	washer
104501	nut m36
104502	nut, nylock m36
118406	tightening wedge, fixed A
118407	tightening wedge, fixed B
110510	back plate fixed upper part
110511	back plate fixed lower part
180215	vibrating bottom plates TK11-42-2V
110515	toggle plate
110516	toggle seat



C106

Parts to suit

PART NUMBER	PRODUCT
104300	upper cheek plate
104304	lower cheek plate
104963	T-head bolt m24
104971	washer m24
104498	nut m24
110290	jaw, fixed, quarry
110292	jaw, swing, quarry
104622	Bolt, fixed jaw
104623	bolt, swing jaw 880mm
104626	bolt, swing jaw 680mm
104501	nut, m36
104502	nut, nylock m36
104512	washer for m36 nut
111206	tube for jaw bolt swing
118400	tightening wedge, fixed/swing
118404	auxiliary wedge, fixwed/swing
110294	back plate fixed/swing
110720	toggle plate
110721	toggle seat



C110

Parts to suit

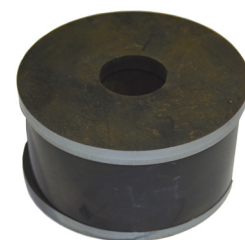
PART NUMBER	PRODUCT
104336	upper cheek plate
104332	lower cheek plate
104334	cheek plate, 1-piece
104964	T-head bolt m36
104512	washer m36
104502	nut, nylock 36
110220	jaw, fixed, quarry
110230	jaw, swing, quarry
110330	deflector plate
110600	jaw support bar, fixed/swing
121340	bolt, jaw support bar
104510	washer, jaw support bar
104500	nut, jaw support bar
110337	back plate, fixed s=8mm
110339	back plate, swing s=8mm
111163	jaw support bar, fixed/swing +45mm
111164	back plate, fixed 45mm
111167	back plate, fixed 70mm
118392	tightening wedge, fixed
118394	tightening wedge, swing A
118395	tightening wedge, swing B
118396	tightening wedge, auxiliary wedge
104624	bolt, swing jaw
104628	bolt, fixed jaw
104629	bolt, fixed, +70mm back plate
104512	washer for m36 nut
104501	nut, m36
104502	nut, nylock m36
104503	nut, m36 "star"
104540	jaw bolt tightening rubber element
110331	toggle plate
110332	toggle seat
110333	stoplug toggle seat, lower A
110334	stoplug toggle seat, lower B
110335	stoplug toggle seat, upper
111330	quideplate A
111331	quideplate B
111332	toggle seat holder



C120

Parts to suit

PART NUMBER	PRODUCT
104380	upper cheek plate
104378	lower cheek plate
104377	cheek plate, 1-piece
104964	T-head bolt m36
104512	washer m36
104502	nut, nylock m36
110270	jaw, fixed, 1-length, quarry +40
110272	jaw, fixed, 1-length, quarry
110271	jaw, fixed, 1-length, supergrip
110277	jaw, fixed, 1-length, cc hd
110273	jaw, fixed, 1/2 HD, quarry
110274	jaw, swing 1-length, quarry +30
110275	jaw, swing 1-length, supergrip
110276	jaw, swing, 1-length, quarry
111208	deflector plate
118370	tightening wedge, fixed/upper
118371	tightening wedge, fixed/middle
118372	tightening wedge, swing/upper
118374	tightening wedge, swing
104618	bolt, fixed jaw/upper 400mm
104619	bolt, fixed jaw/upper 440mm
104623	bolt, swing jaw/upper 880mm
104626	bolt, swing jaw/upper 680mm
104512	washer m36
104501	nut m36
104502	nut, nylock m36
104503	nut, m36 "star"
104540	jaw bolt tightening rubber element
111205	Tube for jaw bolt fixed
111206	Tube for jaw bolt swing
111200	jaw support bar, fixed
111201	jaw support bar, swing
104552	bolt, jaw support bar, fixed/swing
104500	nut for jaw support bar



Parts to suit

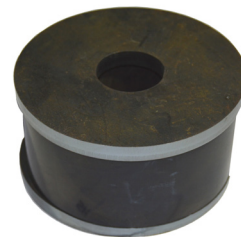
PART NUMBER	PRODUCT
110278	back plate, fixed/swing 2-piece jaws
110279	back plate, fixed/swing
111210	toggle plate
111211	toggle seat, lower
111212	toggle seat, upper
111213	toggle seat holder
111214	toggle seat holde assembly
111215	quideplate
110336	spring pin
104913	bolt
111219	Spacer
180130	grizzle cassette, upper
180131	grizzle cassette, lower
111231	feeder discharge lip wear plate
111232	feeder side wear plate L+R
111233	feeder side wearplate 3.L
111234	feeder side wearplate 3.R
111235	feeder side wearplate 2.L for steel lining
111245	feeder side wearplate 2.L for rubber lining
111236	feeder side wearplate 2.R for steel lining
111246	feeder side wearplate 2.R for rubber lining
111237	feeder side wearplate 1.L for steel lining
111247	feeder side wearplate 1.L for rubber lining
111238	feeder side wearplate 1.R for steel lining
111248	feeder side wearplate 1.R for rubber lining
111241	feeder bottom plate large
111242	feeder bottom plate small
453150	hammer tool



C125

Parts to suit

PART NUMBER	PRODUCT
104348	upper cheek plate
104344	lower cheek plate
104350	cheek plate, 1-piece
104964	T-head bolt m36
104512	washer m36
104502	nut, nylock m36
110238	jaw, fixed, quarry 1/2
110240	jaw, fixed, quarry 1/2 HD
110250	jaw, fixed, quarry, 1-piece
110260	jaw, swing, quarry, 1-piece
110262	jaw, swing, quarry 1/2
110265	back plate, fixed
110267	back plate, swing
110269	deflector plate
104945	deflector plate bolt
118360	tightening wedge, swing
118364	tightening wedge, fixed
118366	tightening wedge, middle wedge
118368	tightening wedge, auxiliary wedge
104630	bolt, fixed jaw m36x480mm
104631	bolt, fixed jaw m36x560mm
104632	bolt, swing jaw 36
104634	bolt, swing, middle m36
104512	washer for m36 nut
104501	nut, m36
104502	nut, nylock m36
104503	nut, m36 "star"
104540	jaw bolt tightening rubber element
119110	jaw support bar, fixed "old"
119111	jaw support bar, swing "old"
119112	jaw support bar, fixed "new"
119113	jaw support bar, swing "new"
104557	jaw support bar, fixed/swing "new"
119129	spacer
119121	toggle plate
119124	toggle seat
119123	toggle seat holder
119125	stoplug toggle seat, lower A
119126	stoplug toggle seat, lower B
119127	quideplate A
119128	quideplate B
119130	stoplug toggle seat, upper
119122	setting wedge pair



C130

Parts to suit

PART NUMBER	PRODUCT
104348	upper cheek plate
104360	lower cheek plate
104364	cheek plate, 1-piece
104964	T-head bolt m36
104512	washer m36
104502	nut, nylock m36
110480	jaw, fixed, 1-piece
110485	jaw, fixed 1/2 HD
110482	jaw, fixed, quarry, 1-piece
111408	deflector plate
118350	tightening wedge, swing
118352	tightening wedge, auxiliary wedge, swing
118354	tightening wedge, fixed
104619	bolt, fixed jaw
104627	bolt, swing jaw
104618	bolt, fixed jaw
104623	bolt, swing jaw
104512	washer for m36 nut
104501	nut m36
104502	nut, nylock m36
104503	nut, m36 "star"
104540	jaw bolt tightening rubber element
111205	tube for jaw bolt fixed
111206	tube for jaw bolt swing
111200	jaw support bar, fixed
104552	bolt, jaw support bar, fixed/swing
111401	jaw support bar, swing
111410	toggle plate
111411	toggle seat, lower
111412	toggle seat, upper
111414	toggle seat holder assembly



C3054

Parts to suit

PART NUMBER	PRODUCT
104330	upper cheek plate
104329	lower cheek plate
104327	cheek plate, 1-piece
104966	bolt m24
104971	washer m24
104498	nut, nylock m24
110280	jaw, fixed
110282	jaw, swing
104540	jaw bolt tightening rubber element, fixed
104544	jaw bolt tightening rubber element, swing
110288	jaw support bar, fixed/swing
119101	toggle plate



C116

Parts to suit

PART NUMBER	PRODUCT
104338	upper cheek plate
104340	lower cheek plate
104963	T-head bolt m24
104971	washer m24
104498	nut, nylock m24
110298	jaw, fixed, quarry
110299	jaw, swing, quarry

Terex 11-75

Parts to suit

PART NUMBER	PRODUCT
110469	upper cheek plate
110467	lower cheek plate
104966	bolt m24
104971	washer m24
104498	nut, nylock m24
110408	jaw, fixed
110410	jaw, swing



Terex 11-60

Parts to suit

PART NUMBER	PRODUCT
110430	upper cheek plate
110432	lower cheek plate
110420	jaw, fixed
110425	jaw, swing



XA 400

Parts to suit

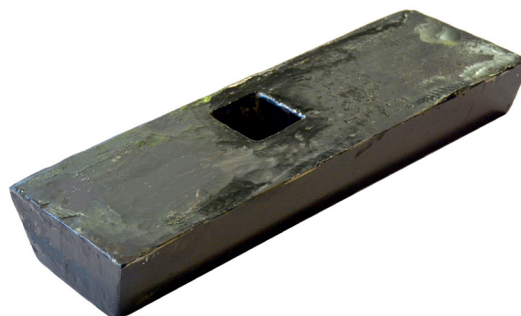
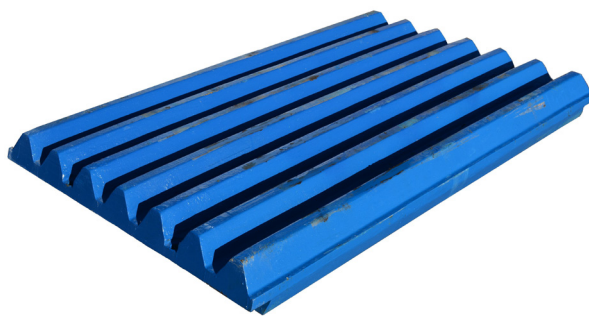
PART NUMBER	PRODUCT
110440	upper cheek plate left
110441	upper cheek plate right
110442	lower cheek plate left
110443	lower cheek plate right
110470	jaw, fixed
110472	jaw, swing



Extec C12

Parts to suit

PART NUMBER	PRODUCT
104453	upper cheek plate
104450	lower cheek plate
104966	bolt m24
104971	washer m24
104498	nut, nylock m24
110372	jaw, fixed HD
110370	jaw, swing HD
118427	tightening wedge, fixed
118430	tightening wedge, swing A
118431	tightening wedge, swing B
104652	bolt, fixed jaw m36
104512	washer for the fixed jaw bolt m36
104501	nut for the fixed jaw bolt m36
104654	bolt, fixed jaw m42
104520	nut for the swing jaw bolt m42



JM-1107

Parts to suit

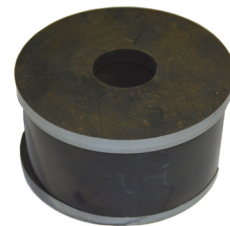
PART NUMBER	PRODUCT
104442	cheek plate, 1-piece
104968	bolt m24
104971	washer m24
104498	nut, nylock m24
110406	jaw, fixed HD, quarry
110402	jaw, swing
110403	jaw, swing, quarry
110396	tightening wedge, swing
104657	bolt, swing jaw m30
110400	back plate s=8mm
110401	deflector plate



JM-1206

Parts to suit

PART NUMBER	PRODUCT
104118	upper cheek plate
104116	lower cheek plate
110326	jaw, fixed/swing
118410	tightening wedge
104610	bolt, fixed jaw
104106	bolt, swing jaw
104514	washer m33
104506	nut m33
110348	deflector plate
104101	back plate
104102	toggle plate
104103	toggle seat



JM-1208/ CJ412 (UJ440)

Parts to suit

PART NUMBER	PRODUCT
104422	upper cheek plate
104420	lower cheek plate
104424	cheek plate, 1-piece left
104425	cheek plate, 1-piece right
104968	bolt m24
104971	washer m24
104498	nut, nylock m24
110350	jaw, fixed HD
110351	jaw, fixed CC
110360	jaw, swing HD
110361	jaw, swing CC
110362	jaw, swing ST
118410	tightening wedge fixed/swing
104610	bolt, fixed jaw m33
104614	bolt swing jaw m33
104514	washer for m33 bolt
104506	nut m33
104504	nut, nylock m33
104540	jaw bolt tightening rubber element
118675	jaw support
118677	jaw support +30mm
104972	bolt m20, fixed support part
104974	bolt m20, swing support part
104977	washer m20
104976	nut, nylock m20
110348	deflector plate
110341	back plate, s=30 mm
110343	back plate, s=6mm
110347	jaw lock, s=40mm
110349	setting wedge



Parts to suit

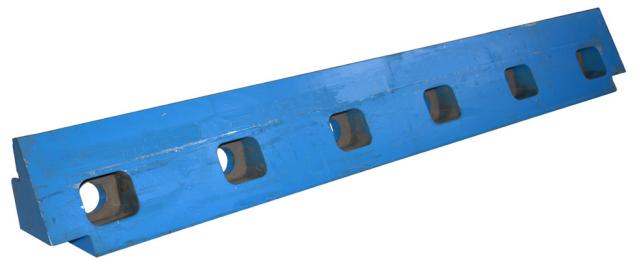
PART NUMBER	PRODUCT
110365	toggle plate
110364	toggle seat, upper
131135	stoplug toggle seat, upper
110363	toggle seat, lower stoplug
110366	toggle seat holder
131137	guideplate
131132	tension rod
131133	tension rod clevis
131130	spring tension rod
104520	nut for tension rod
131102	feeder bottom plate, wide
131103	feeder bottom plate, narrow
131110	feeder side plate
131104	feeder spring



JM-1211/CJ612

Parts to suit

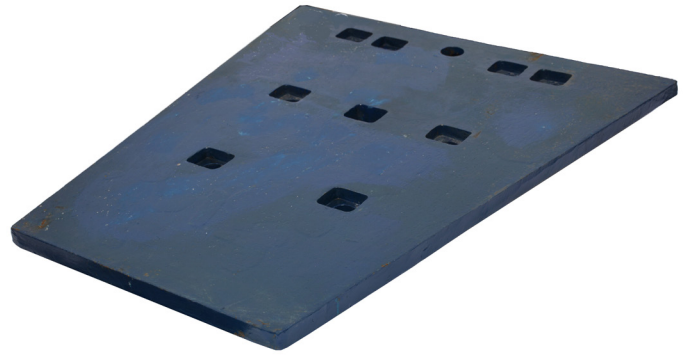
PART NUMBER	PRODUCT
104432	upper cheek plate
104430	lower cheek plate
104431	lower cheek plate
104541	cheek plate bolt
110367	jaw, fixed CC, 1-piece
110369	jaw, swing CC, 1-piece
104138	tightening wedge, fixed
104134	tightening wedge, fixed +50mm
104130	tightening wedge, swing
104616	bolt, fixed jaw
104617	bolt, swing jaw
104512	washer
104501	nut
104502	nut, nylock
104144	jaw support, fixed
104148	jaw support, swing
110388	back plate, fixed
110389	back plate, swing
110365	toggle seat
104141	toggle seat, lower
104142	toggle seat, upper, hydraulic setting adjustment
104150	guideplate upper/lower
104151	guideplate upper middle
104143	spring tension rod



JM-1511/CJ615

Parts to suit

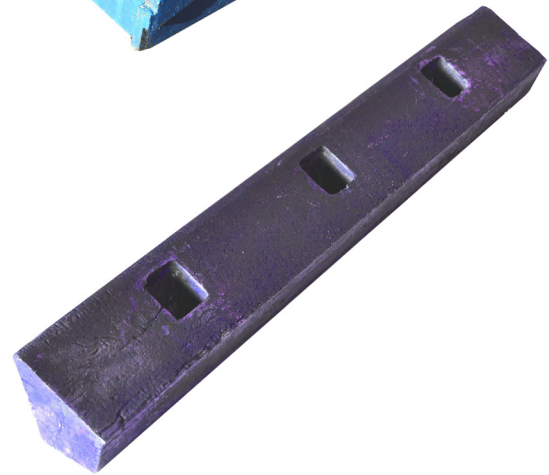
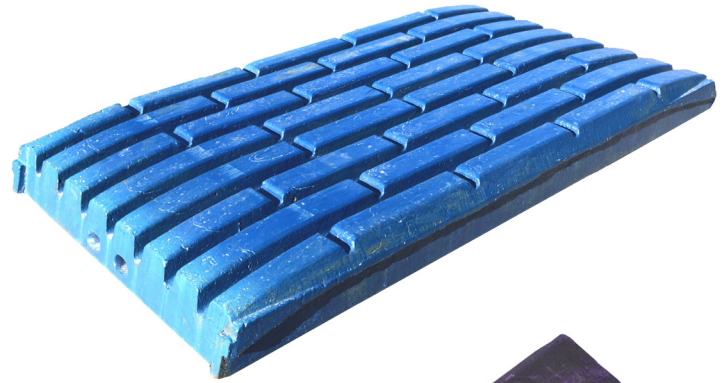
PART NUMBER	PRODUCT
104438	upper cheek plate
104436	lower cheek plate
104439	cheek plate, 1-piece
110394	jaw, fixed CC, 1-piece
110395	jaw, swing CC, 1-piece
111373	deflector plate
110398	tightening wedge, fixed
110397	tightening wedge, swing
111398	bolt, fixed jaw
110399	tightening wedge, fixed +50mm
111397	bolt, swing jaw
111399	bolt, fixed jaw +50mm
111370	back plate, fixed
111372	back plate, swing
111374	jaw support, fixed/swing
110380	toggleplate
110385	toggle seat , upper
110386	toggle seat, lower
110384	toggle seat holder
110373	side block RH
110374	side block LH
110375	side block bolt
110376	washer



R10580-180

Parts to suit

PART NUMBER	PRODUCT
104461	upper cheek plate
104460	lower cheek plate
110390	jaw, fixed, quarry
110392	jaw, swing, quarry
118418	tightening wedge, fixed
118419	tightening wedge, swing



Cone crushers

G2610, G3210

Parts to suit

PART NUMBER	PRODUCT
120420	mantle G2610 and G3210
120426	concave G2610
120427	concave G3210
120428	torch ring
104535	concave fastening screw, m30
104510	washer for m30 nut
104500	nut, nylock m30
120568	arm liner pinion shaft
120569	arm liner



GP200S

Parts to suit

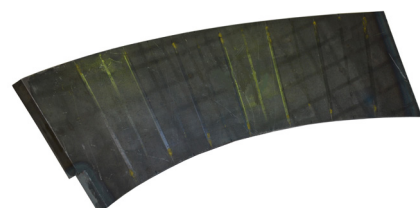
PART NUMBER	PRODUCT
120412	mantle
120413	mantle oversize
120414	torch ring
120588	concave, upper 33-10
120586	concave, lower 33-10
120582	concave, lower 25-10
120611	concave fastening wedge
104530	concave fastening screw
104510	washer
104500	nut
120650	spider grease
120551	rim liner, straight
120553	rim liner A
120552	rim liner B



GP300S

Parts to suit

PART NUMBER	PRODUCT
120600	mantle 28/38-12
120604	concave, upper 28-12
120602	concave, lower 28-12
120598	concave, upper 38-12
120594	concave, lower 38-12
120522	torch ring
120611	concave fastening wedge
120592	spider bush seal
120650	spider grease
120515	cone tightening nut
104535	concave fastening screw m30
104510	washer for m30 nut
104500	nut, nylock m30
120596	mainshaft sleeve
120595	spider bush
120570	top cover
120572	mainshaft assembly
120573	eccentric bushing
120543	key for eccentric bushing
120544	key for eccentric shaft
123501	bottom shell bushing
120597	dust seal
120673	retaining ring
120599	piston wearing plate set
120607	rim liner plate A
120609	rim liner plate B
123605	rim liner plate bolted middle
123606	rim liner plate bolted A
123607	rim liner plate bolted B
120605	lower frame shield plate (1 pc)
120606	lower frame shield plate (2 pcs)
123603	arm liner, new frame
123530	frame bolt
123531	washer
123532	nut
123520	lower frame



GP500s

Parts to suit

PART NUMBER	PRODUCT
120639	mantle EC
120642	concave, upper EC
120643	concave, upper C
120640	concave, lower C/EC
120636	torch ring
120611	concave fastening wedge
104543	concave fastening screw 480mm
104512	washer m36
104502	nut m36
120650	spider grease
120655	spider bush seal
123671	cone tightening nut
123672	mainshaft sleeve
123673	spider bush
123677	dust seal
120671	piston wearing plate set
123662	rim liner
123663	rim liner A
123664	rim liner B
123668	rim liner plate



G4214

Parts to suit

PART NUMBER	PRODUCT
120620	mantle C/EC
120622	concave, upper EC
120624	concave, lower EC
120628	torch ring
123600	cone tightening nut
120611	concave fastening wedge
120650	spider grease
120671	piston wearing plate set
123622	rim liner plate
123623	rim liner plate A
123624	rim liner plate B



G128

Parts to suit

PART NUMBER	PRODUCT
-------------	---------

120404	mantle
--------	--------

120450	concave G128
--------	--------------

120461	torch ring
--------	------------

G158

Parts to suit

PART NUMBER	PRODUCT
-------------	---------

120406	mantle
--------	--------

120454	concave G158
--------	--------------

120463	torch ring
--------	------------



G1810, G1010

Parts to suit

PART NUMBER	PRODUCT
120410	mantle G1010 and G1810
120460	concave G1810
120462	torch ring
120513	spider bush seal
104530	concave fastening screw m30
104510	washer for m30 nut
104500	nut, nylock m30
120517	dust seal
120568	arm liner pinion shaft
120569	arm liner
120569	arm liner



GP11 F (C,M)

Parts to suit

PART NUMBER	PRODUCT
120510	mantle G20/G1211
120556	concave G1211
120560	concave G2011
120512	torch ring G20/G1211
120513	spider bush seal
120567	spider grease
120481	mainshaft sleeve
120565	cone fastening nut
104530	concave fastening screw GP11
104510	washer for m30 nut
104500	nut m30 nylock
120480	mainshaft assembly
120514	eccentric bushing, throw 25mm
120516	bottom shell bushing
120517	dust seal G11
120530	rim liner A G11F
120532	rim liner B G11F
120533	rim liner plate A G11F (new frame)
120534	rim liner plate B G11F (new frame)
120568	arm liner pinion shaft
120569	arm liner



GP11 M (EC,C)

Parts to suit

PART NUMBER	PRODUCT
120511	mantle G22-11
120562	concave G22-11
120566	torch ring G22-11
120510	mantle G1811 and GP2011
120561	mantle G1811
120512	torch ring G1811 and G2011
120513	spider bush seal
120567	spider grease
120481	mainshaft sleeve
120565	cone tightening nut
104530	concave fastening screw GP11
104532	concave fastening screw m30 G22-11 special
104500	nut, nylock m30
104510	washer for m30 nut
120480	mainshaft assembly
120514	eccentric bushing, throw 25mm
120516	bottom shell bushing
120517	dust seal G11
120535	rim liner plate G11M
120568	arm liner pinion shaft
120569	arm liner



GP220

Parts to suit

PART NUMBER	PRODUCT
120690	mantle C/M
120694	concave C
120699	torch ring
120890	cone tightening nut
104534	concave fastening screw
104971	washer m24
104498	nut, nylock m24
120884	mainshaft sleeve
120882	spider bush
120880	dust seal
120870	piston wearing plate set



GP300

Parts to suit

PART NUMBER	PRODUCT
120521	mantle G13- and G1012
120520	mantle G26, 20- and G1812
120524	concave G10 G1812
120526	concave G13- and G2012
120528	concave G2612
120522	torch ring 20mm
120523	torch ring 25mm
120592	spider bush seal
120650	spider grease
120515	cone tightening nut
104530	concave fastening screw m30
104510	washer m30
104500	nut, nylock m30
120591	mainshaft sleeve
120593	spider bush
120519	mainshaft assembly
120542	eccentric bushing 25, 32, 40
123502	eccentric
120543	key for eccentric bushing
120544	key for eccentric shaft
123501	bottom shell bushing
123509	piston
123508	plate
123510	seal, piston
120599	piston wearing plate set
120590	dust seal
120570	top cover
120518	upper frame
120547	rim liner plate A, bolted
120549	rim liner plate B, bolted
120537	rim liner plate A, weldable
120539	rim liner plate B, weldable
120605	lower frame shield plate (1 pc)
120606	lower frame shield plate (2 pcs)
120577	arm liner
123530	frame bolt
123531	washer
123532	nut
123520	lower frame



GP330

Parts to suit

PART NUMBER	PRODUCT
120720	mantle EC/C
120721	mantle M/MF/F
120728	concave C
120727	concave M
120724	torch ring
120732	spider bush seal
120735	cone tightening nut
104530	concave fastening screw
104510	washer m30
104500	nut, nylock m30
120733	mainshaft sleeve
120740	mainshaft assembly
120734	spider bush
120730	upper frame
120741	bottom shell bushing
120742	eccentric bushing
120743	eccentric
120744	piston wearing plate set
120590	dust seal
120750	arm liner
120751	wear plate for arm liner
120752	fastening item for arm liner
120160	bolt, arm liner
120753	wear plate for lower frame
120754	wear plate for lower frame
120755	wear plate for lower frame
120756	bolt wear plate
104510	washer
104500	nut
120737	rim liner plate A
120738	rim liner plate B
104992	fastening bolt for rim liner
104971	washer
104498	nut nylock
123530	frame bolt
123531	washer
123532	nut
120760	countershaft assembly
120761	countershaft



G2614, G1814, G1014

Parts to suit

PART NUMBER	PRODUCT
120610	mantle G26-, G18- and G1014
120612	concave G2614
120614	concave G1814
120616	concave G1014
120618	torch ring
120665	spider bush seal
120619	cone tightening nut
104537	concave fastening screw m36 G2614
104502	nut m36 nylock
104512	washer m36
120671	piston wearing plate set
120650	spider grease
123611	mainshaft sleeve



GP500

Parts to suit

PART NUMBER	PRODUCT
120631	mantle G18- and G2215
120633	concave C G2215
120367	torch ring G18- and G2215
120630	mantle MF G1315
120634	concave MF G1315
120636	torch ring G1315
120665	spider bush seal
120650	spider grease
120666	cone tightening nut
104537	concave fastening screw m36x330mm
104539	concave fastening screw m36x400mm
104542	concave fastening screw m36x460mm
104502	nut m36 nylock
104512	washer m36
120661	mainshaft sleeve
120662	spider bush
120645	dust seal
120671	piston wearing plate set
120667	rim liner plate
120668	rim liner plate A
120669	rim liner plate B



GP550

Parts to suit

PART NUMBER	PRODUCT
120632	mantle (EC,C,M,MF,F)
120646	concave (M)
120635	concave (C)
120641	concave (EC)
120638	torch ring
120655	spider bush seal
120650	spider grease
120656	cone tightening nut
104539	concave fastening screw m36x400mm
104502	nut m36 nylock
104512	washer m36
123767	rim liner plate middle
123768	rim liner plate A
123769	rim liner plate B
120651	mainshaft sleeve
120652	spider bush
120657	mainshaft assembly
120658	eccentric bushing 25, 32
123758	eccentric bushing 28, 36
120654	bottom shell bushing
120659	eccentric
120653	dust seal
120671	piston wearing plate set



HP200

Parts to suit

PART NUMBER	PRODUCT
123150	mantle STD (F/M/C)
123152	concave C
123154	concave M
123158	torch ring
123159	feed cone
120160	bolt
120161	washer
123160	feedcone seal
122380	crusher backing
123166	concave fastening wedge
123167	concave fastening screw
123168	nut for fastening screw
123169	washer for fastening screw
123170	counterweight liner
123171	main frame liner



S3800

Parts to suit

PART NUMBER	PRODUCT
120250	mantle A
122255	concave c, upper, segment (8 pcs)
122253	concave, lower C
122285	torch ring
122286	spider bush seal
122380	crusher backing
122381	spider grease
122312	cone tightening nut
122292	mainshaft sleeve
122291	spider bush
122262	dust seal
122263	main shaft step 1/3
122264	step washer 2/3
122265	piston wearing plate 3/3



S4000/S4800/CS440

Parts to suit

PART NUMBER	PRODUCT
122336	mantle A
122337	mantle B
122340	concave C, upper, segment (8 pcs)
122341	concave EC, upper, segment (8 pcs)
122350	concave lower, C
122351	concave lower, rotary cut, C
122348	concave, lower, 1-stage EC
122360	torch ring
122380	crusher backing
122358	spider bush seal
122381	spider grease
122307	cone tightening nut
122309	inner head nut
122375	rim liner plate (6 pcs)
122374	top cover
122330	mainshaft sleeve
122359	spider bush
122327	dust seal
122355	seal ring
122361	eccentric bushing 20,25,30,36mm
122357	bottom shell bushing
122368	eccentric
122369	ring
121358	countershaft assembly
121359	countershaft



Parts to suit

PART NUMBER	PRODUCT
121357	seal countershaft
121356	seal countershaft
121333	locating bar
121334	locating bar shim t=0,1mm
121335	locating bar shim t=0,5mm
121336	locating bar shim t=0,7mm
121337	locating bar shim t=1,0mm
122363	main shaft step 1/3
122364	step washer 2/3
122365	piston wearing plate 3/3
122373	arm shield, top shell (2 pcs)
122305	arm liner pinion shaft (2 pcs)
122306	arm liner (2 pcs)
122376	frame bolt
122378	washer
122377	nut
121310	hydroset cylinder
121311	hydroset cylinder cover
121312	hydroset cylinder cover plug
121313	hydroset cylinder bush
121314	hydroset piston
121315	chenvron packing
121322	hydroset cylinder cover plug O-ring
121323	hydroset cylinder bush O-ring outer
121324	Hydroset cylinder bush O-ring inner
121320	hydroset cylinder O-ring



S6000/CS660

Parts to suit

PART NUMBER	PRODUCT
122382	mantle A
122387	concave, upper C
122385	concave, lower C
122389	torch ring
122380	crusher backing
122381	spider grease
122396	cone tightening nut
122402	mainshaft cover lid "hat"
122388	arm shield, top shell
122405	rim liner
122399	mainshaft sleeve
122417	spider bush
122426	dust seal ring
122427	retaining ring
122420	piston wearing plate 1/3
122421	step washer 2/3
122422	mainshaft step 3/3
122429	arm liner pinion shaft (1 pc), old frame
122431	arm liner (2 pcs), old frame
122410	lower frame wear plate
122411	lower frame wear plate
122412	lower frame wear plate
122413	lower frame wear plate
122376	frame bolt
122377	nut



H3000/H3800 and CH430

Parts to suit

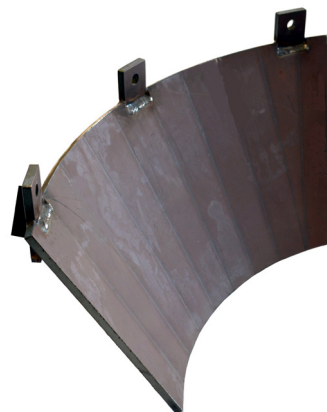
PART NUMBER	PRODUCT
122270	mantle A
122271	mantle B
122272	mantle HC
122280	concave MC
122281	concave EC
122276	concave MC
122282	concave C
122285	torch ring
122286	spider bush seal
122381	spider grease
122312	cone tightening nut
122315	feed hopper, left part C/MC
122316	feed hopper, right part C/MC
122292	mainshaft sleeve
122291	spider bushing
122262	dust seal
122266	eccentric bushing H3000 ja CH430
122267	bottom shell bushing
122263	mainshaft step 1/3
122264	step washer 2/3
122265	piston wearing plate 3/3



H4000/H4800/CH440

Parts to suit

PART NUMBER	PRODUCT
122310	mantle A
122318	mantle B
122311	mantle HC
122322	concave M
122323	concave MC
122324	concave C
122320	concave EC
122360	torch ring
122380	crusher backing
122358	spider bush seal
122381	spider grease
122307	cone tightening nut
122309	inner head nut
122297	feed hopper plate MC (2 pcs)
122298	feed hopper plate MC (2 pcs)
122301	feed hopper plate EC (2 pcs)
122303	feed hopper plate EC (2 pcs)
122330	mainshaft sleeve
122359	spider bush
122333	mainshaft assembly
122327	dust seal
122366	key for eccentric bushing
122362	eccentric bushing 32,36,40,44mm
122367	eccentric bushing 24,28,32mm
121368	key for eccentric
122368	eccentric
122369	ring
121333	locating bar
121334	locating bar shim t=0,1mm
121335	locating bar shim t=0,5mm
121336	locating bar shim t=0,7mm
121337	locating bar shim t=1,0mm
122357	bottom shell bushing
122363	mainshaft step 1/3
122364	step washer 2/3
122365	piston wearing plate 3/3
122355	seal ring H4000
121355	top cover



Parts to suit

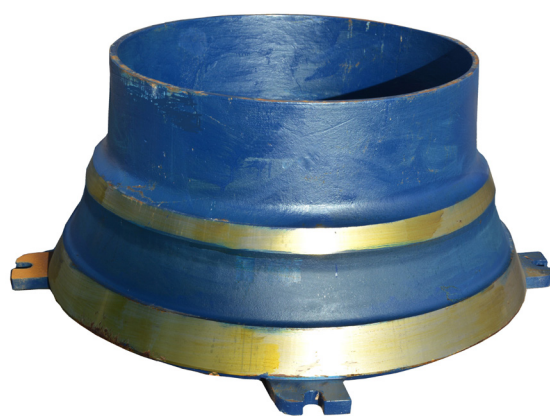
PART NUMBER	PRODUCT
122328	support ring
104558	bolt for support ring (6pcs)
122326	sleeve (6 pcs)
122379	disc spring for support ring
122379	washer
104500	nut for support ring
122353	scraper
122354	retainer
122376	bolt topshell
122377	nut topshell
121310	hydroset cylinder
121311	hydroset cylinder cover
121312	hydroset cylinder cover plug
121313	hydroset cylinder bush
121314	hydroset piston
121315	chenvron packing
121322	hydroset cylinder cover plug O-ring
121323	hydroset cylinder bush O-ring outer
121324	Hydroset cylinder bush O-ring inner
121320	hydroset cylinder O-ring
122329	filler ring
121340	bolt filler ring
121341	filler ring washer
121342	filler ring shim t=1mm
121343	filler ring shim t=3mm
121344	filler ring shim t=5mm
121345	filler ring shim t=10mm
122305	arm liner pinion shaft (1 pc)
122306	arm liner (2 pcs)
121358	countershaft assembly
121359	countershaft
121357	seal countershaft
121356	seal countershaft
121370	lower frame wear plate
121371	lower frame wear plate
121372	lower frame wear plate
121373	lower frame wear plate
121374	lower frame wear plate
121375	lower frame wear plate
121376	lower frame wear plate



CH550

Parts to suit

PART NUMBER	PRODUCT
122450	mantleA
122456	concave MC
122458	concave C
122464	concave CX
122465	concave EC
122478	torch ring
122381	spider grease
122479	cone tightening nut
104536	concave fastening screw, m30
104510	washer m30
104500	nut, nylock m30
122304	hopper plate EC
122474	hopper plate C
122473	hopper plate frame C
122440	arm liner pinion shaft
122441	arm liner
122443	lower frame wear plate
122444	lower frame wear plate
122445	lower frame wear plate
131338	pre-screen spring



H6800

Parts to suit

PART NUMBER	PRODUCT
122390	mantle D
122394	concave CX
122389	torch ring
122381	spider grease
122380	crusher backing
122396	cone tightening nut
122399	mainshaft sleeve
122417	spider bush
122426	dust seal
122427	retaining ring
122420	piston wearing plate 1/3
122421	step washer 2/3
122422	mainshaft step 3/3
122429	arm liner pinion shaft (1 pc), old frame
122431	arm liner (2 pcs), old frame
122432	arm liner pinion shaft (1 pc), new frame
122433	arm liner (4pcs), new frame
122410	lower frame wear plate
122411	lower frame wear plate
122412	lower frame wear plate
122413	lower frame wear plate
122376	frame bolt
122377	nut





WIRE SCREENS AND EQUIPMENT

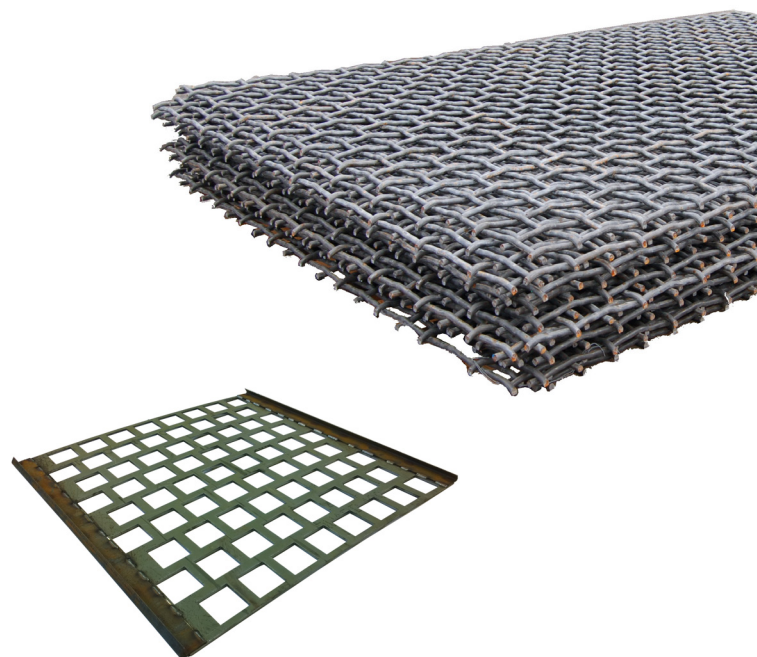
Wire screens

Wire screens, square hole

MESH/WIRE MM:	MESH/WIRE MM:
2,5x2,5/1,12	28x28/6,0
3x3/1,5	30x30/6,0
4x4/2,0	30x30/8,0
5x5/2,0	30x30/10,0
6x6/2,0	32x32/6,0
7x7/2,0	32x32/8,0
7x7/3,0	35x35/8,0
8x8/2,0	35x35/10,0
8x8/3,0	38x38/8,0
9x9/2,0	38x38/10,0
9x9/3,0	40x40/6,0
10x10/2,0	40x40/8,0
10x10/3,0	40x40/10,0
11x11/3,0	42x42/8,0
12x12/3,0	42x42/10,0
13x13/3,0	45x45/8,0
14x14/4,0	45x45/10,0
14x14/5,0	50x50/8,0
15x15/4,0	50x50/10,0
16x16/4,0	55x55/8,0
16x16x/6,0	55x55/10,0
17x17/5,0	60x60/8,0
18x18/4,0	60x60/12,0
18x18/5,0	65x65/8,0
18x18/6,0	65x65/12,0
19x19/5,0	70x70/8,0
19x19/6,0	70x70/12,0
20x20/4,0	75x75/8,0
20x20/5,0	75x75/12,0
20x20/6,0	80x80/8,0
21x21/6,0	80x80/12,0
22x22x/4,0	90x90/12,0
22x22/5,0	100x100/12,0
22x22/6,0	110x110/12,0
24x24/6,0	120x120/12,0
25x25/6,0	
26x26/6,0	

Wire screens, rectangular

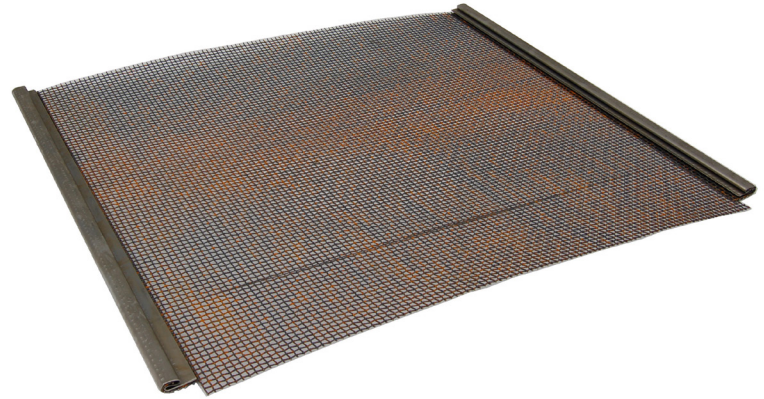
MESH/WIRE MM:	MESH/WIRE MM:
1,5x15,0/1,0	8,0x12,0/2,0
2,0x9,0/1,0	8,0x16,0/2,0
2,5x15,0/1,5	8,0x28,0/2,0
2,5x26,5/1,5	8,0x52,0/3,0
2,5x58,5/1,5	8,0x100,0/2,0
3,0x15,0/1,5	10,0x16,0/3,0
3,0x50,0/1,5	10,0x30,0/3,0
4,0x20,0/1,5	12,0x50,0/3,0
4,0x52,0/2,0	16,0x50,0/4,0
4,0x100,0/2,0	30,0x70,0/8,0
5,0x19,0/2,0	10,0x12,0/3,0
5,0x33,0/2,0	10,0x16,0/3,0
6,0x12,0/2,0	10,0x30,0/3,0
6,0x22,0/2,0	12,0x50,0/3,0
6,0x50,0/2,0	16,0x50,0/4,0
6,0x100,0/2,0	30,0x70,0/8,0
7,0x15,0/2,0	



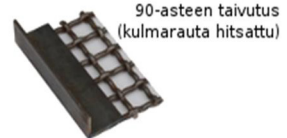
Wire screens

In addition to steel wire mesh. We offer part also supplies perforated abrasion resistant mesh and polyurethane and rubber screening media. Abrasion resistant mesh plates are manufactured according to customer's wishes. The size and shape of the net according to the sieve dimensions. The size and shape of the openings are freely selectable.

Tension and self-supporting nets are made with the desired aperture size according to the size of the sieve on request.



90-asteen taivutus



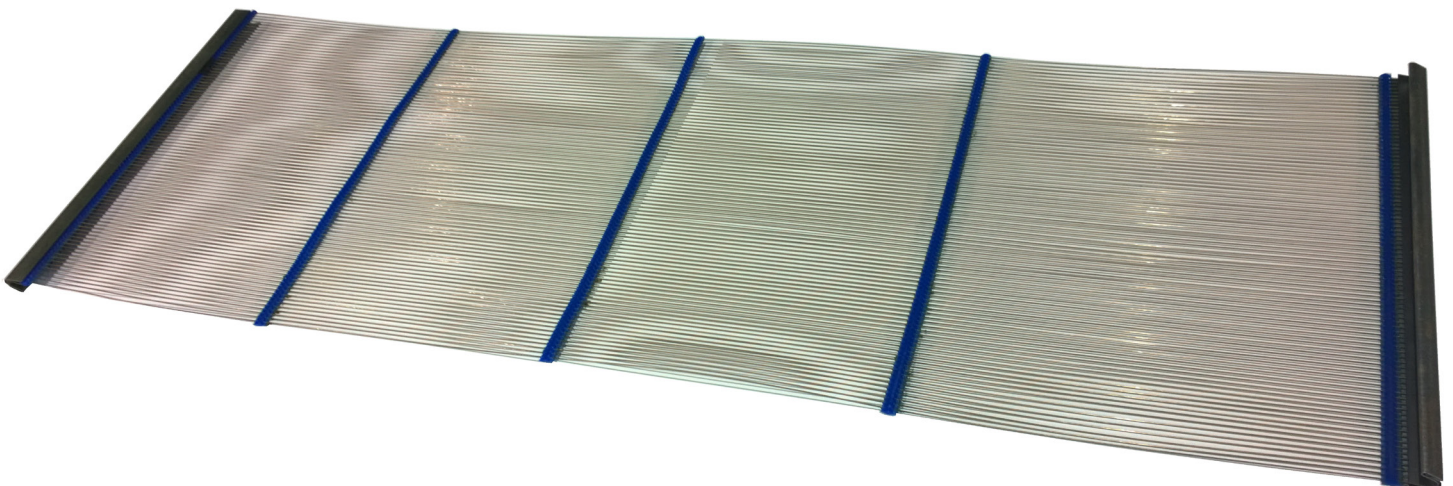
90-asteen taivutus
(kulmarauta hitsattu)



U-taivutus



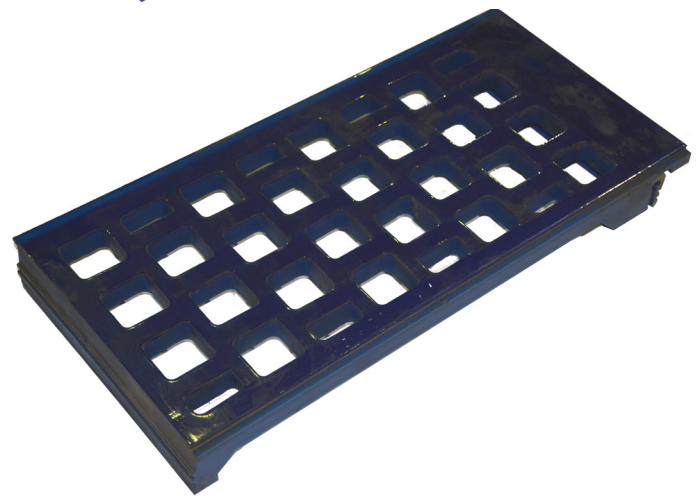
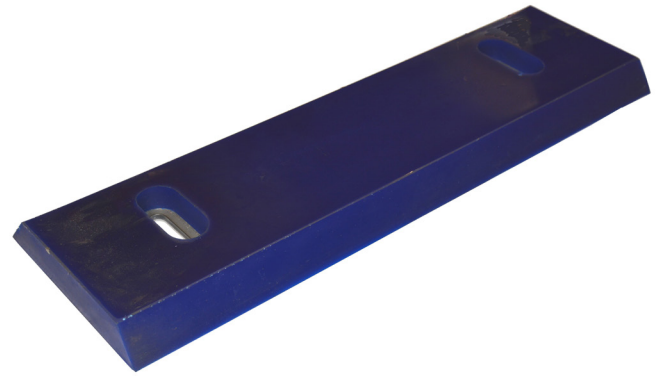
0-asteen taivutus



Screen modules

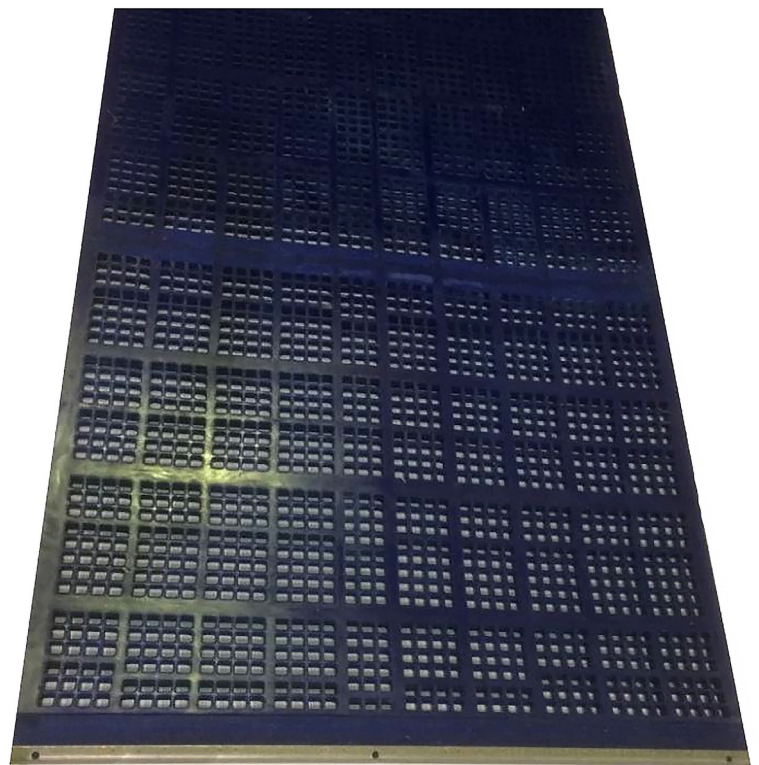
PART NUMBER	PRODUCT	HOLE
757020	modular panel rubber	20x20mm
757022	modular panel rubber	22x22mm
757030	modular panel rubber	30x30mm
757035	modular panel rubber	35x35mm
757040	modular panel rubber	40x40mm
757065	modular panel rubber	65x65mm
757070	modular panel rubber	70x70mm
757080	modular panel rubber	80x80mm
757110	modular panel rubber	110x110mm
757120	modular panel rubber	120x120mm

We supply standard size polyurethane module networks with the desired hole size.



Side protector

PART NUMBER	PRODUCT
122612	side protector 184x600mm polyurethane
122613	side protector 184x600mm rubber



Side clamping bars

PART NUMBER	PRODUCT	MODEL
135240	side clamping rail	Terex
135242	side clamping rail	CH2100
135244	side clamping bar	FS353
135247	side clamping bar	FS302/303
135250	side clamping rail	LOK2100
135254	side clamping bar	LOK280
135258	side clamping bar	LOK132
135260	side clamping bar 2000mm	LOK256
135266	side calmping bar, short	QE440/QE441
135267	side calmping bar, long	QE440/QE441
135268	side calmping bar	QA331
135264	side clamping bar, old model	LT330D
135265	side clamping bar, new model	LT330D



Hook bolts and washers

PART NUMBER	PRODUCT	DIMENSIONS
330220	hook bolt m16	m16x165 mm
330230	hook bolt m16, long	m16x195 mm
330267	hook bolt m16, extra long	m16x300 mm
330250	hook bolt m12	m12x165 mm
330260	hook bolt m12, long	m12x185 mm
330280	hook bolt washer m16	8x100x100
330284	hook bolt washer m16	8x150x150
330286	hook bolt washer m16	50x50x8
330287	hook bolt U-washer m16	80x80x L=100
330288	hook bolt washer m12	8x60x60
223290	nut m16	
330265	nut m12	



Wedgebolts

PART NUMBER	PRODUCT
135304	wedge bolt 16x134 mm
135306	wedge bolt 16x154 mm
135308	wedge
135312	half ball washer
135313	washer, lopsided



Rubber profiles

PART NUMBER	PRODUCT	
330100	rubber profile no 1	delivery lot 20m
330102	rubber profile no 2	delivery lot 20m
330110	rubber profile	6x60 mm flat bar
330120	rubber profile Z	



Screen tightening hooks

PART NUMBER	PRODUCT	MODEL
650105	screen tightening hook	LT330D lower/middle deck
650110	screen tightening hook	LOK280/2100 lower deck
650120	nut (long) for tightening hook	LOK280/2100 lower deck
650140	washer for tightening hook 6mmx45/22	LOK280/2100/FS302/303
650150	spring for tightening hook	LOK280/2100/FS302/303
650116	screen tightening bolt m20x260/100	FS302/303
650126	nut for tightening hook m20x60	FS302/303
650130	screen tensioner hook	ST-wire screen
650160	screen tightening bolt	XS144
650161	nut (long) for tightening bolt	XS144
650162	screen tensioner hook	TRX683
650101	screen tightening groove	CH450/CH550 lower deck
104975	tightening bolt for hook/groove	CH450/CH550/LT330D
104977	washer for tightening bolt	CH450/CH550/LT330D
104976	nut for tightening bolt	CH450/CH550/LT330D
104978	bolt, m20x120	
650165	nut, long J&S	
104979	nut m20	



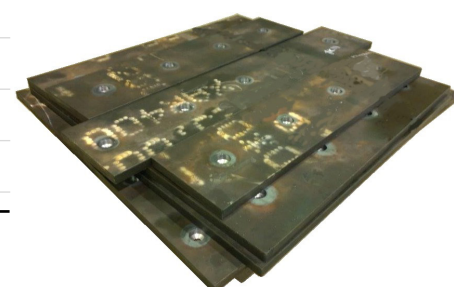
Side bar, wear steel

PART NUMBER	PRODUCT	MODEL
910110	side bar s=12mm	Lok280
910120	side bar s=12mm	Lok2100
910125	side bar s=10mm	FS302/303
104988	bolt, 16x50mm	zink head
104931	washer, m16	
104930	nut, nylock m16	
910130	side bar, straight	LT330D
910132	side bar, right, small bevel	LT330D
910133	side bar, left, small bevel	LT330D
910135	side bar, right, big bevel	LT330D
910136	side bar, left, big bevel	LT330D
104985	bolt, 12x70mm	
104919	washer, m/2	
223289	nut, nylock m/2	
910138	side bar, bottom and middle deck	LT330D
910139	side bar, bottom and middle deck	LT330D



Grizzlebars and grizzle cassettes

PART NUMBER	PRODUCT	MODEL
180110	grizzlebar	VF-544-2V
180111	grizzlebar, side	VF-544-2V
180113	grizzlebar, lower	VF-561
180120	grizzlebar, upper	1344
180121	grizzlebar, upper, side	1344
180124	grizzlebar, lower	1344
180125	grizzlebar, lower, side	1344
180140	grizzlebar	1656
180141	grizzlebar, upper, side	1656
180145	grizzlebar, lower	1656
180146	grizzlebar, lower, side	1656
180223	grizzle cassette, upper	1344
180225	grizzle cassette, lower	1344
180246	grizzle cassette, upper	GP300S
180248	grizzle cassette, lower	GB300S
180265	grizzle cassette	GF1246 (JM1208)
180211	grizzle cassette, upper	TK11-42-2V
180213	grizzle cassette, lower	TK11-42-2V
180130	grizzle cassette, upper	LT120
180131	grizzle cassette, lower	LT120
180272	grizzle cassette, J&S	JF1030



Feeder plates/vibrating bottom and side plates

Product program also includes plates for the most common feeders.

For example: LOK10-44, LOK13-44, LOK16-56

Different scantling available, s=20, 25, 30 mm

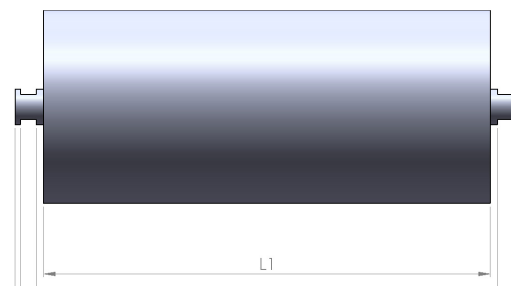
PART NUMBER	PRODUCT	MODEL
180240	vibrating bottom plates, 1+1+1 pcs	GBP300
180244	vibrating bottom plates 1+1+1 pcs extend	GBP300
180241	vibrating side plates, 2+2 pcs	GBP300
104984	bolt m12	zink head
104919	washer m12	
223289	nut m12	nylock
180215	vibrating bottom plates	TK11-42-2V



SMOOTH ROLLERS

Smooth rollers, steel

PART NUMBER	DIAMETER MM	L1 MM	AXIS D MM
371100	89	200	20
371102	89	250	20
371104	89	315	20
371106	89	380	20
371108	89	465	20
370100	108	200	20
370102	108	250	20
370104	108	315	20
370106	108	380	20
370108	108	465	20
370110	108	530	20
370112	108	600	20
370114	108	670	20
370115	108	710	20-A
370116	108	750	20
370117	108	820	20-A
370118	108	950	20
370120	108	1150	20
370121	108	1250	20
370122	108	1400	20
370124	108	1600	20
370126	108	1800	20
370355	108	1200	30
370359	108	1400	30
370364	133	315	25
370366	133	380	25
370368	133	465	25
370370	133	530	25
370382	133	1150	25
370388	133	1250	25
370378	133	885	30
370380	133	950	30
370381	133	1100	30
370384	133	1250	30
370386	159	1150	30
370390	159	1400	30
370391	159	1500	30



PART NUMBER	PRODUCT
370372	roller holder and roll 20 deg.
370373	roller holder and roll 30 deg.
370374	roller holder and roll 40 deg.
370375	roller holder and roll 50 deg.
370376	roller holder and roll 60 deg.



Ringrollers, rubber

PART NUMBER	DIAMETER MM	L1 MM	AXIS MM D
370150	108	250	20
370152	108	315	20
370154	108	380	20
370156	108	465	20
370158	108	530	20
370160	108	600	20
370166	133	1400	30



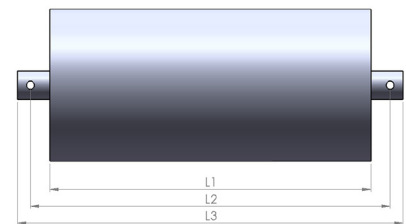
Disc rollers, rubber

PART NUMBER	DIAMETER MM	L1 MM	AXIS D MM
370200	108	600	20
370202	108	750	20
370201	108	760	20 crescent
370203	108	800	20
370205	108	875	20
370204	108	905	20
370206	108	950	20
370208	108	1050	20
370210	108	1100	20
370211	108	1105	20 crescent
370212	108	1150	20
370213	108	1200	20
370214	108	1250	20
370215	108	1320	20 crescent
370216	108	1350	20
370218	108	1400	20
370219	108	1430	20
370220	108	1502	20
370222	108	1600	20
370224	108	1800	20
370235	108	1430	25
370396	133	1600	25
370169	133	1400	30
370392	133	1460	30
370946	wedge for smooth girland rollers A		20
370948	wedge for smooth girland rollers B		20
370942	wedge for smooth girland rollers A		30
370944	wedge for smooth girland rollers B		30



Smooth girland rollers, steel

PART NUMBER	DIAMETER MM	L1 MM	AXIS D MM
371250	89	200	20
371252	89	250	20
371253	89	290	20
371254	89	315	20
371256	89	380	20
371258	89	465	20
370250	108	200	20
370252	108	250	20
370254	108	315	20
370256	108	380	20
370258	108	465	20
370260	108	530	20
370262	108	600	20
370263	108	670	20
370264	108	750	20
370273	108	315	25
370275	108	380	25
370277	108	465	25
370279	108	530	25
370281	108	600	25
370284	108	750	25



Smooth girland rollers, rubber

PART NUMBER	DIAMETER MM	L1 MM	AXIS D MM
370310	108	250	20
370312	108	315	20
370314	108	380	20
370316	108	465	20
370318	108	530	20
370320	108	600	20
370322	108	670	20
370324	108	750	20
370328	108	950	20

Impact bars

PART NUMBER	DIMENSIONS MM	
122671	50x100x1200	polyethylene top
122673	50x100x1500	polyethylene top
122675	75x100x1200	polyethylene top
122679	75x100x1500	polyethylene top
104918	t-bolt, m12	
104919	washer, m12	
223289	nut, nylock m12	
104917	t-bolt, m16	
104931	washer, m16	
104930	nut, nylock m16	



Guide roller, hourglass

PART NUMBER	DIAMETER MM	L1/L2 DIMENSIONS MM	AXIS D MM	MATERIAL	WEIGHT KG
370406	125/80	95/195	m24	gum	3
370410	150/62	70/105	m12	steel	2,6

Guide roller, steel

PART NUMBER	DIAMETER MM	L1/L2 DIMENSIONS MM	AXIS D MM	WEIGHT KG
370400	63,5	150/200	m16	1,6
370404	108	210/260	m16	3,4
370405	108	220/370		

Fastening sets

PART NUMBER	PRODUCT	AXIS D MM
370930	fastenin set	20
370932	fastening set	25
370934	fastening set	30
370933	assembly work	
370936	wedge for smooth girland rollers	
370940	U-bolt for roller	
370977	Flexco 190 (100 pc)	
370974	punch Flexco 190 HP1	
370975	socket Flexco 190 HW1	



Ribrolls

PART NUMBER	WIDTH OF THE BELT	DIMENSIONS MM
390322	650	210-690/785-40
390323	800	210-830/950-40
390256	800	200-830/1070-55
390259	800	250-830/1070-55
390258	800	320-830/1070-55
390257	1000	250-1050/1350-55
390260	1000	320-1050/1350-55
390268	1200	250-1230/1470-55
390270	1200	320-1230/1470-55
390277	1200	320-1230/1600-70
390280	1400	250-1450/1760-70
390282	1400	320-1450/1760-70
390284	1600	320-1650/1960-70
390320	1100 idler	273-1080/1350-70
390274	1300 idler	270-1300/1570-60
390275	1300 idler	270-1300/1570-70
390292	1400 idler	270-1520/1720-60
390325	1400 idler	250-1460
390305	ribroll sleeve	70/55x105
390307	Pulley friction beam	
390309	Bolt for pulley friction beam	
390415	1000	400-1100/1660-55
390492	pulley flange	axis 70mm



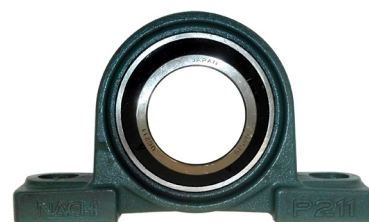
DUST SUPPRESSION WATER SPRAY NOZZLE

PART NUMBER	PRODUCT	SPIRAL
131101	brass, adjustable	3/8 BSPP



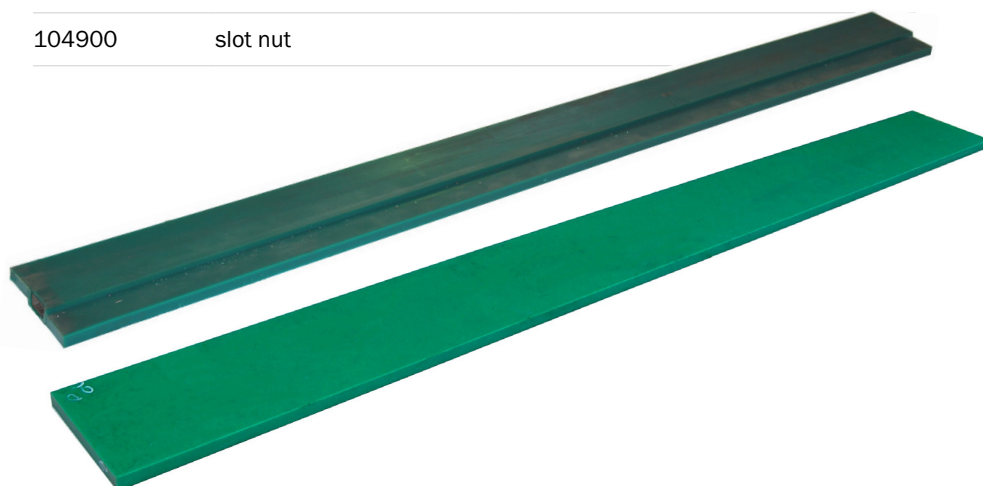
BRACKET BEARINGS AND FLANGE

PART NUMBER	PRODUCT	SHAFT Ø	MODEL
390101	bracket bearing	55	UCP211
390102	bracket bearing	55	UCP311
390104	bracket bearing	60	UCP212
390106	bracket bearing	70	UCP214
390103	bracket bearing	70	UCP314
390112	flange bearing	50	UcFc 210
390116	flange bearing	70	UcFc 214
390123	pillow block bearing	60	UCT212
390125	pillow block bearing	70	UCT214



WEAR RESIST.RUBBER AND PLANK SCRAPERS

PART NUMBER	PRODUCT	DIMENSIONS MM
122615	wear resist.rubber	6x2000x10000
122639	wear resist.rubber	10x150x10000
122640	wear resist.rubber	10x200x10000
122641	wear resist.rubber	10x250x10000
122642	wear resist.rubber	10x300x10000
122602	wear resist.rubber	10x2000x10000
122631	wear resist.rubber	15x150x10000
122621	wear resist.rubber	15x200x10000
122632	wear resist.rubber	15x250x10000
122633	kulutuskumi	15x300x10000
122601	wear resist.rubber	15x2000x10000
122623	wear resist.rubber	20x200x10000
122636	wear resist.rubber	20x250x10000
122648	wear resist.rubber	20x2000x5000
122647	wear resist.rubber	20x2000x5000
122645	wear resist.rubber	30x400x1000
122649	wear resist.rubber	30x2000x5000
122651	wear resist.rubber	40x2000x5000
122652	sandwich rubber strip	20x150x10000
122654	sandwich rubber strip	20x200x10000
122610	pur-plank scraper	165x2150
122616	pur-plank scrapers flat	15x30x2000
122620	pe-plank scraper	20x200x2000
122618	pur-scraper	150
122663	pe-plate	15x1250x3000
122665	pe-plate	20x1250x3000
104900	slot nut	



DEMOLITION TOOLS FOR HAMMERS

PART NUMBER	MODEL	LENGTH MM	REFERENCE	WEIGHT KG
453360	blunt	1150	Atlas Copco HB2200	152
453365	blunt	1150	Atlas Copco HB2500	163
453370	blunt	1300	Atlas Copco HB3000/HB3100	208
453375	blunt	1200	Atlas Copco HB3600	222
453380	blunt	1350	Atlas Copco HB4200	258
453395	blunt	1000	Atlas Copco HBC2500	92
453530	blunt	1250	Bretec L30C/R35P	155
453404	blunt	1250	Furukawa F22	135
453420	blunt	1400	Furukawa F35	186
453430	blunt	1500	Furukawa F45	241
453470	blunt	1400	Furukawa FXJ375/FX375	198
453476	blunt	1500	Furukawa FXJ475	256
453077	point	850	Rammer BR999	40,5
453116	point	1050	Rammer E64	78
453118	blunt	850	Rammer E65	79
453120	blunt	1050	E2166	
453122	blunt	900	Rammer E68	90
453126	point	1200	Rammer E68	119
453100	blunt	1050	Rammer G80	122
453128	blunt	1050	Rammer G88	125
453130	blunt	1250	Rammer G90	188
453131	blunt	1250	Rammer G99	203
453078	point	780	Rammer S23	18
453080	blunt	830	Rammer S25	23
453082	blunt	1100	Rammer S25	28
453092	blunt	1100	Rammer S26	42
453098	blunt	1100	Rammer S27	42
453099	point	900	Rammer S29	48
453135	blunt	1050	Rammer S54	82
453140	blunt	1000	Rammer S56	100
456143	point	1100	Rammer S56	110
453108	blunt	1050	Rammer S82	122
453110	blunt	1050	Rammer S83	122
453112	blunt	1200	Rammer S84	173
453114	blunt	1300	Rammer S86	222
453150	blunt	800	Soosan SB43	27
453158	blunt	1200	Soosan SQ/SB 100	160
453160	blunt	1200	Soosan SQ/SB 121/120	169
453170	blunt	1400	Soosan SQ/SB 130/140	224



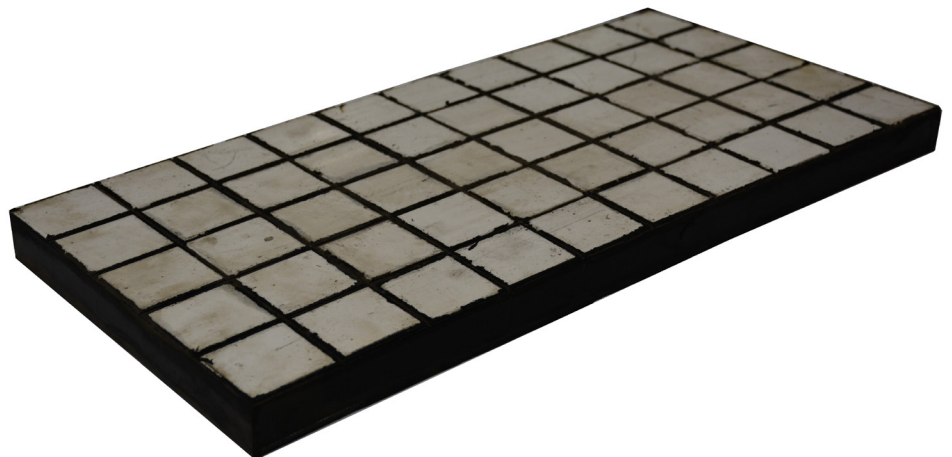
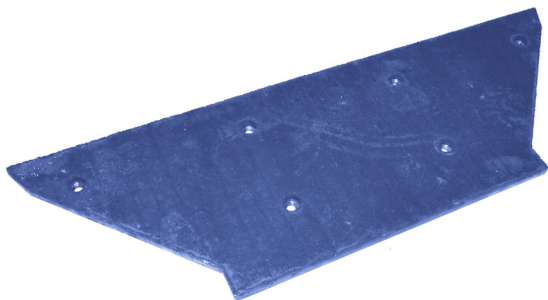


CARBIDE PRODUCTS

PART NUMBER	PRODUCT	DIMENSIONS MM	WEIGHT KG
400722	chocky bar	22x40x240	1,62
400724	chocky bar	22x65x240	2,77
400726	chocky bar	22x100x240	4,01
400731	wear button	60x24	0,6
400732	wear button	75x24	0,9
400734	wear button	90x28	1,44
400736	wear button	115x30	2,46
400755	wearing plate	23x375x485	33,9



500132	hardfacing wear plate	6+4x1500x3000
500152	hardfacing wear plate	8+5x1500x3000
500172	hardfacing wear plate	10+5x1500x3000
500182	hardfacing wear plate	10+9x1500x3000
500196	hardfacing wear plate	16+16x1500x3000
411132	ceramic plate	30x250x500 HEX
411134	ceramic plate	30x500x500 HEX
411032	ceramic plate	30x250x500 square
411034	ceramic plate	30x500x500 square





BUCKET WEAR PARTS

Bucket manufacturing and maintenance requires high-quality parts. Our selection includes wear parts and guards for excavators and wheel loaders.

We offer fast delivery on parts like cutting edges, wear strips, teeth and other bucket wear parts. Should you not find the exact cutting edge you need, we can supply them cut to size.

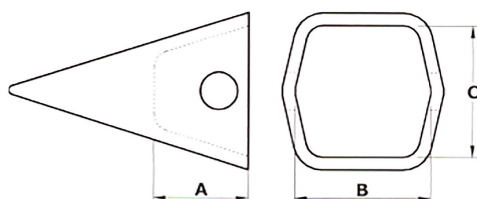


TEETH AND ADAPTERS

PART NUMBER	SIZE	PRODUCT	MODEL	WEIGHT KG
400500SL	J200	tooth, SL	1U-3222	1,4
400500RC	J200	tooth,rock chisel RC	1U-3222-RC	1.3
400310	J200	adapter, two strap 16-20mm	119-3204	1.5
400610	J200	pin 11x60mm	8E-6208	0.1
400630	J200	ring 11/18mm	4T-0001	0.05
400502M	J250	tooth,V-type	1U-3252	2.9
400502RC	J250	tooth,rock chisel RC	1U-3252-RC	3.7
400312	J250	adapter, two strap 25mm	3G-0169	4.1
400612	J250	pin 14x81mm	8E-6258	0.1
400634	J250	washer14/30mm	8E-6259	0.05
400518M	J300	tooth,V-type	1U-3302	4.0
400518RC	J300	tooth,rock chisel RC	1U-3302RC	5.5
400314	J300	adapter, two strap 30mm	3G-6304-HD	7.3
400614	J300	pin 14x92mm	9J-2308	0,1
400634	J300	washer 14/30mm	8E-6259	0,1
400520M	J350	tooth,V-type	1U-3352	5.6
400520RC	J350	tooth,rock chisel RC	1U-3352-RC	8.3
400316	J350	adapter, two strap 40mm	6I-6354	9.0
400616	J350	pin 19x105mm	8E-6358	0.2
400636	J350	washer 19/40mm	8E-6359	0.1



TALLA/SIZE	A	B	C
200	62	40	47
250	80	53	68
300	89	66	77
350	102	75	83
460	121	98	98
550	142	119	109
600	170	143	130
700	180	155	155

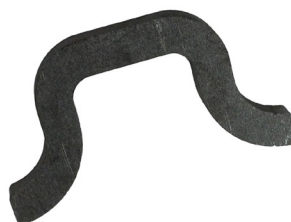


PART NUMBER	SIZE	PRODUCT	MODEL	WEIGHT KG
400522RC	J460	tooth,rock chisel RC	1U-3452-RC	14.2
400522	J460	wheel loaders tooth	RP	23
400319	J460	adapter HD, flashmount 50mm		21,4
400335	J460	adapter, flashmount 50mm	8E-0464	16.9
400618	J460	pin 24x136mm	8E-0468	0.5
400638	J460	washer 24/44mm	8E-8469	0.2
400524RC	J550	tooth,rock chisel RC	1U-3552-RC	23.5
400524X	J550	wheel loaders tooth, sharp	X-3055	20,0
400524PT	J550	wheel loaders tooth	PT550	24,0
400321	J550HD	adapter HD, flashmount 60mm	6I-6445	33,0
400336	J550	adapter, flashmount 60mm	3G-4554	34.2
400620	J550	pin 25x162mm	6Y-8558	0.6
400640	J550	washer 25/53mm	8E-5559	0.3
400641	J550	ring, spirial		
400526RC	J600	tooth,rock chisel RC	6I-0602RC	37.0
400323	J600HD	adapter HD, flashmount 70mm	6I-6604	53.0
400622	J600	pin 30x193mm	6I-6608	1.0
400642	J600	washer 30/59mm	6I-6609	0.4
400643	J600	ring, spirial		
400528RC	J700	tooth,rock chisel RC	4T-4702-RC	48.0
400324	J700	adapter, two strap 80mm	4T-4704	72,5
400326	J700	adapter, two strap 90mm	222-7700	86,5
400624	J700	pin32x197mm	4T-4708	1.4
400644	J700	washer 32x70mm	4T-4707	0.5
400807		bofors tooth, small excav.	326107	4.1
400817		adapter, small excav.	326108	2.0
400819		lock pin 13x70mm		0.1



SHROUDS

PART NUMBER	PRODUCT	MODEL	WEIGHT KG
400821	lip shroud	LP-50-150	7,70
400820	lip shroud	scb-70-250	22,00
400822	lip shroud	scb-90-360-30	36,00
400883	lip shroud bolted centre	width 312mm	42,00
400884	lip shroud bolted RH	width 312mm	43,00
400885	lip shroud bolted LH	width 312mm	43,00
400886	lip shroud bolted centre	width 342mm	47,00
400887	lip shroud bolted RH	width 342mm	44,00
400888	lip shroud bolted LH	width 342mm	44,00
400898	lip shroud bolt		
400899	lip shroud nut		
400830	heel shroud	hs 175-140 20-40 tn	10,00
400840	heel shroud	hs 230-190 40-80 tn	20,40
400842	heel shroud	hs 300-250 over 100tn	40,50
400845	side shrouds, short	166-2877-40	17,90
400650	side shroud pin	used with 400845	0,20
400655	side shroud ring	used with 400845	0,10
400865	adapter for side protector	used with 400846	20,40
400866	backplate for side protector	used with 400847	1,10



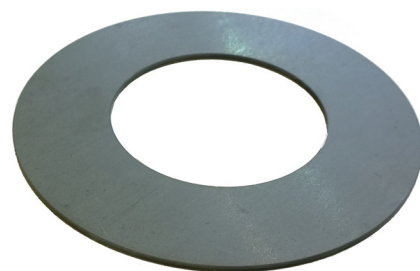
ADJUSTMENT PLATES

Shim plates

PART NUMBER	FASTENER	NUMBER OF HOLES	DIMENSIONS MM	THICKNESS MM
712160	ntp 10-40	2	80x150	1
712164	ntp 10-40	2	80x150	2
712168	ntp 10-40	2	80x150	3
712172	ntp 10-40	2	80x150	4
712176	ntp 10-40	4	150x160	1
712180	ntp 10-40	4	150x160	2
712184	ntp 10-40	4	150x160	3
712188	ntp 10-40	4	150x160	4
712192	ntp 10-40	2	80x150	12
712196	ntp 10-40	4	150x160	12

Tolerance rings

PART NUMBER	DIMENSIONS MM	PIN MM	THICKNESS MM
711031	55/31	30	1
711033	55/31	30	3
711041	73/41	40	1
711043	73/41	40	3
711051	92/51	50	1
711053	92/51	50	3
711061	110/61	60	1
711063	110/61	60	3
711071	132/71	70	1
711073	132/71	70	3
711081	151/81	80	1
711083	151/81	80	3
711091	170/91	90	1
711093	170/91	90	3
711101	180/101	100	1
711103	180/101	100	3
711111	190/111	110	1
711113	190/111	110	3



FASTENERS

Adjustment parts

PART NUMBER	PRODUCT/MODEL
712210	adjustment part ntp - 10-40
712213	adjustment parts shim ntp - 10-40
712215	shimplate 1mm
712217	shimplate 2mm
712219	shimplate 3mm



Weld on brackets

PART NUMBER	MODEL
712103	ntp - 10
712107	ntp -20/ 30
712109	ntp - 40
712112	S-40
712113	S-45
712114	S-50
712116	S-60
712118	S-70
712119	S-80
712120	S-90



Wheel loader ear brackets

PART NUMBER	MODEL
712228	Volvo -50
712230	Volvo, small (50-120)
712235	Volvo, big (150-)



Weld on excavator hook

PART NUMBER	MODEL
712303	3t
712305	5t
712308	8t
712310	10t

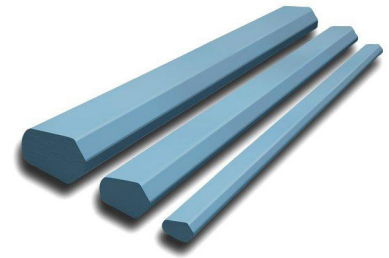


Wedgelock

PART NUMBER	MODEL
870102	ntp - 10 hook
870104	ntp - 20/30 hook
870106	ntp - 40 hook

GROSER BARS

PART NUMBER	PRODUCT AND DIMENSIONS MM	WEIGHT KG	PROFIL NO
570030	24x42x3000	21	24-t
570032	30x16x3000	8	46
570034	40x22x3000	16	78
570036	50x27x3000	25	92
570038	65x30x3000	36	96
570040	68x37x3000	47	98
570042	75x45x3000	59	100



PROFILE EDGES

PART NUMBER	PRODUCT AND DIMENSIONS MM	WEIGHT KG
570001	101 HB500 101x21x6100	58
570002	101 HB500 101x21x3000	29
570005	151 HB500 151x32x6100	122
570006	151 HB500 151x32x3000	61



BOLT-FASTENED BRUSH EDGES

PART NUMBER	PRODUCT	DIMENSIONS MM	WEIGHT KG	BOLT	WASHER
570718	wear blade HB500	16x220x624	16,1	223405, FH 16x55	223291, m16
570719	wear blade HB500	16x220x666	17,1	223405, FH 16x55	223291, m16
570704	wear blade HB500	16x220x710	17	223405, FH 16x55mm	223291, m16
570705	wear blade HB500	16x220x744	17,4	223405, FH 16x55mm	223291, m16
570720	wear blade HB500	16x220x768	19,8	223405, FH 16x55	223291, m16
570700	wear blade HB500	20x200x626	17,5	223420, m20x70mm	223422, m20
570702	wear blade HB500	20x200x686	17,8	223420, m20x70mm	223422, m20
570717	wear blade HB500	25x250x608	26,5	223450, m24x80mm	223442, m24
570708	wear blade HB500	25x320x626	36,7	223450, m24x80mm	223442, m24
570706	wear blade HB500	25x320x686	38,0	223450, m24x80mm	223442, m24
570716	wear blade HB500	30x350x800	61,8	223450, m24x80mm	223442, m24



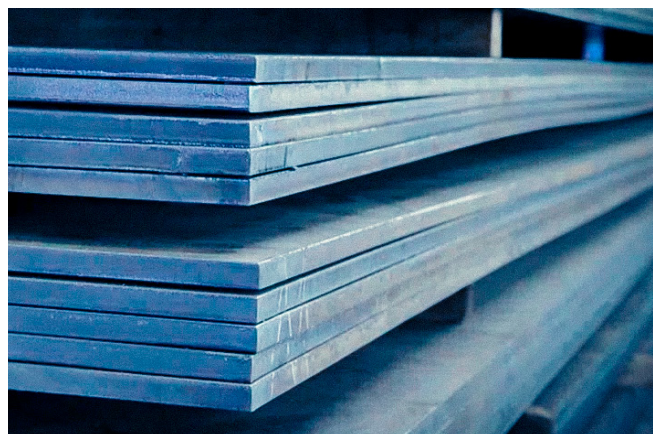


ABRASION RESISTANT STEEL AND EXTRA HIGH STRENGTH STRUCTURAL STEEL

For abrasion-resistant steels, excellent malleability and weldability are important characteristics that will save you time. Demanding applications will also require top-notch abrasion resistance, impact resistance and ductility.

The Raex 400, 450, 500 and Strenx 690 steels we offer excel in all these areas.

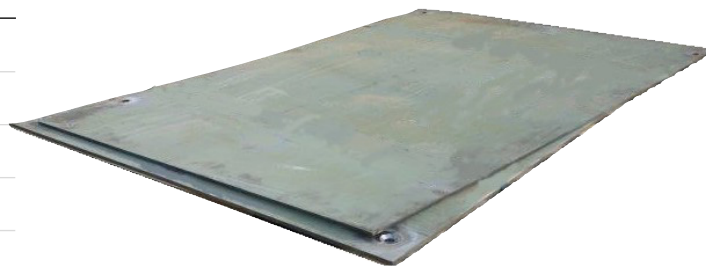
You can order abrasion-resistant steels as half-plates or cut to even smaller



ABRASION RESISTANT STEEL

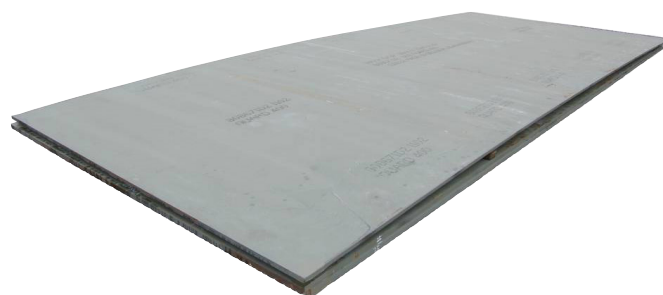
Abrasion resistant steel HB400

PART NUMBER	DIMENSIONS MM	WEIGHT KG
570504	4x2450x6000	470,4
570505	5x2450x6000	588
570506	6x2450x6000	705,6
570508	8x2450x6000	940,8
570510	10x2450x6000	1176
570512	12x2450x6000	1411,2
570516	16x2450x6000	1881,6
570520	20x2450x6000	2352
570525	25x2450x6000	2940
570530	30x2450x6000	3528
570535	35x2450x6000	4116
570540	40x2450x8000	6272
570550	50x2450x7000	6860
570560	60x2450x6000	7056
570570	70x2450x8000	10976



Abrasion resistant steel HB500

PART NUMBER	DIMENSIONS MM	WEIGHT KG
570608	8x2450x6000	940,8
570610	10x2450x6000	1176
570612	12x2450x6000	1411,2
570616	16x2450x6000	1881,6
570620	20x2450x6000	2352
570625	25x2450x6000	2940
570630	30x2450x6000	3528
570635	35x2450x8000	5488
570640	40x2450x8000	6272
570650	50x2450x7000	6860
570660	60x2450x8000	9408
570670	70x2450x8000	10976



Abrasion resistant steel HB400

PART NUMBER	DIMENSIONS MM	WEIGHT KG
57050415	4x2450x1500	117,6
57050430	4x2450x3000	235,2
57050515	5x2450x1500	147
57050530	5x2450x3000	294
57050615	6x2450x1500	176,4
57050630	6x2450x3000	352,8
57050815	8x2450x1500	235,2
57050830	8x2450x3000	470,4
57051015	10x2450x1500	294
57051030	10x2450x3000	588
57051215	12x2450x1500	352,8
57051230	12x2450x3000	705,6
57051615	16x2450x1500	470,4
57051630	16x2450x3000	940,8
57052015	20x2450x1500	588
57052030	20x2450x3000	1176
57052515	25x2450x1500	735
57052530	25x2450x3000	1470
57053015	30x2450x1500	882
57053030	30x2450x3000	1764

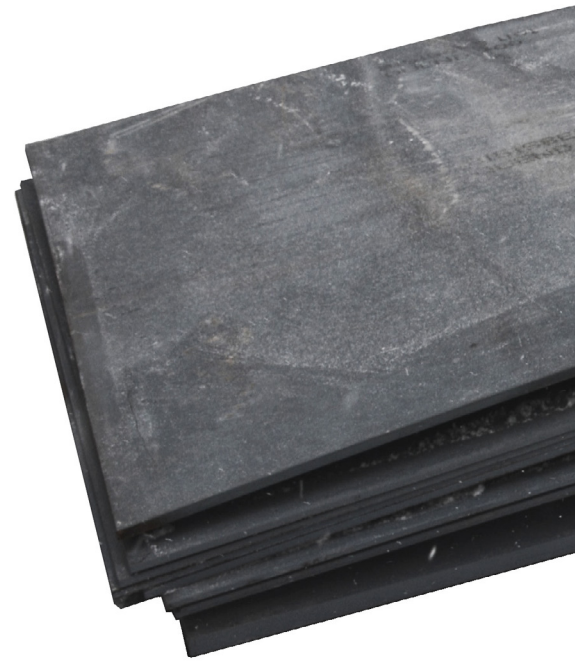
Abrasion resistant steel HB400

PART NUMBER	DIMENSIONS MM	WEIGHT KG
57061015	10x2450x1500	294
57061030	10x2450x3000	588
57061215	12x2450x1500	352,8
57061230	12x2450x3000	705,6
57061615	16x2450x1500	470,4
57061630	16x2450x3000	940,8
57062015	20x2450x1500	588
57062030	20x2450x3000	1176

EXTRA HIGH STRENGTH STRUCTURAL STEEL

Extra high strength structural steel Strenx 690

PART NUMBER	DIMENSIONS MM	WEIGHT KG
510508	8x2450x6000	940,8
510510	10x2450x6000	1176
510512	12x2450x6000	1411,2
510516	16x2450x6000	1881,6
510520	20x2450x6000	2352
510525	25x2450x6000	2940
510530	30x2450x6000	3528



SPADE CUTTING EDGES

Spade Cutting Edges are cut according to request.

Hardness options: HB400, 450 and 500

Please give us the following information when ordering:

S = scantling

L = width

sk = height of the side

kk = height of the point

If required: **t**=flat section to the point

In addition, the desired bevel shape

Flame cutting, drilling.

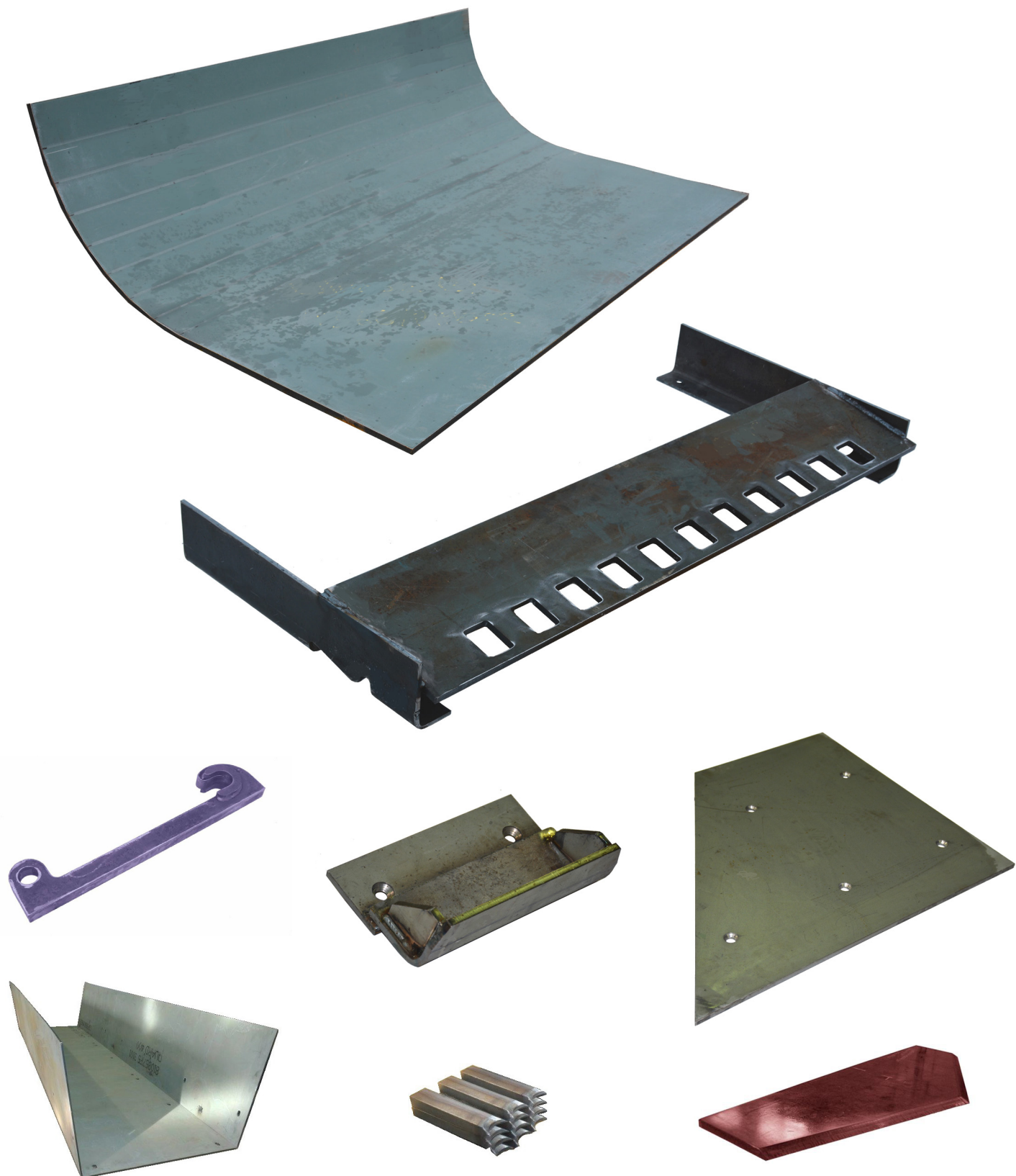
We deliver the steel wear parts cut to size.

On request, we will drill, square and weld the parts according to your wishes.

FLAME CUTTING, DRILLING, SQUARING

We deliver the steel wear parts cut to size.

On request, we will drill, square and weld the parts according to your wishes.



CUTTING EDGE, SINGLE BEVEL

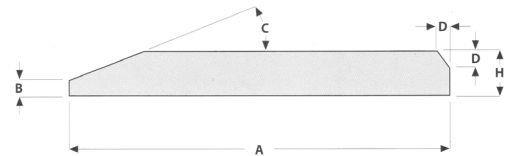
HB400

PART NUMBER	THICKNESS H	WIDTH A	LENGTH MM	BEVEL °	WEIGHT KG
5701701	60	500	2000	22	446
5701741	60	600	2000	22	576
5701772	70	600	1900	22	638
5701773	70	600	2200	22	739



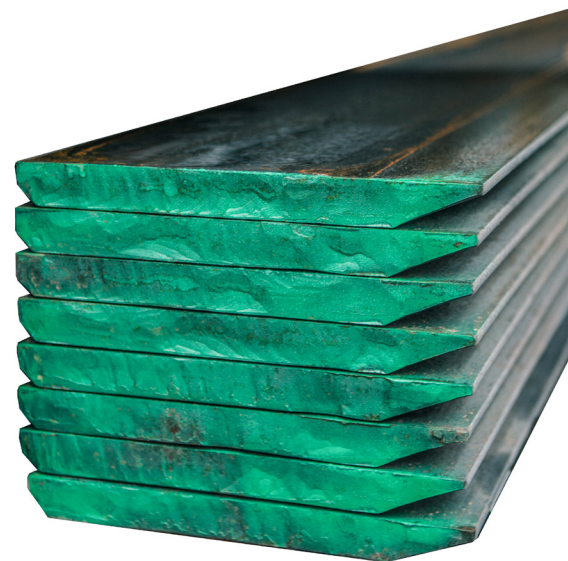
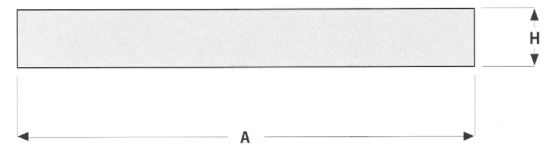
HB500

PART NUMBER	THICKNESS H	WIDTH A	LENGTH MM	BEVEL °	WEIGHT KG
570110	12	110	6100	24	59
570111	12	110	3000	24	29
570112	16	110	6100	24	80
570113	16	110	3000	24	39
570118	16	150	6100	24	110
570119	16	150	3000	24	54
570120	20	150	6100	23	130
570121	20	150	3000	23	64
570127	20	200	6100	23	178
570128	20	200	3000	23	88
570129	25	200	6100	23	227
570130	25	200	3000	23	111
570131	25	250	6100	23	276
570132	25	250	3000	23	136
570133	30	250	6100	23	336
570134	30	250	3000	23	165
570142	30	300	7500	23	495
5701421	30	300	5000	23	330
5701422	30	300	2500	23	165
570149	35	300	7500	23	582
5701491	35	300	5000	23	388
5701492	35	300	2500	23	194
570159	40	300	7500	23	670
5701591	40	300	5000	23	446
5701592	40	300	2500	23	223
570161	40	400	7500	24	888
5701611	40	400	5000	24	592
5701612	40	400	2500	24	296
570164	50	300	7500	24	807
5701641	50	300	5000	24	538
5701642	50	300	2500	24	269
570166	50	400	7500	24	1114
5701661	50	400	5000	24	742
5701662	50	400	2500	24	371



WEAR STRIPS 500HB

PART NUMBER	THICKNESS H	WIDTH A	LENGTH MM	WEIGHT KG
570300	8	60	6100	23,2
570305	8	60	3000	11,6
570301	10	60	6100	33,8
570302	10	80	6100	40,0
570304	10	80	3000	20,0
570306	10	100	6100	48,0
570308	10	100	3000	24,0
570312	12	80	6100	46,0
570313	12	80	3000	23,0
570314	12	100	6100	56,8
570315	12	100	3000	29,0
570316	12	150	6100	88,0
570317	12	150	3000	44,0
570318	12	200	6000	116,0
570319	12	200	3000	58,0
570322	15	80	6100	58,0
570323	15	80	3000	29,0
570320	15	100	6100	72,0
570321	15	100	3000	36,0
570324	15	150	6100	108,0
570325	15	150	3000	59,0
570330	20	80	6100	76,0
570331	20	80	3000	38,0
570332	20	100	6100	96,0
570333	20	100	3000	48,0
570338	20	120	6100	118,0
570339	20	120	3000	57,6
570336	20	150	6100	144,0
570337	20	150	3000	72,0
570345	20	200	6100	192,0
570344	20	200	3000	94,0
570340	25	100	6100	118,0
570341	25	100	3000	60,0
570346	25	200	6100	246,0
570350	30	100	6100	144,0
570351	30	100	3000	72,0
570347	30	200	6100	288,0
570361	40	100	6100	193,0

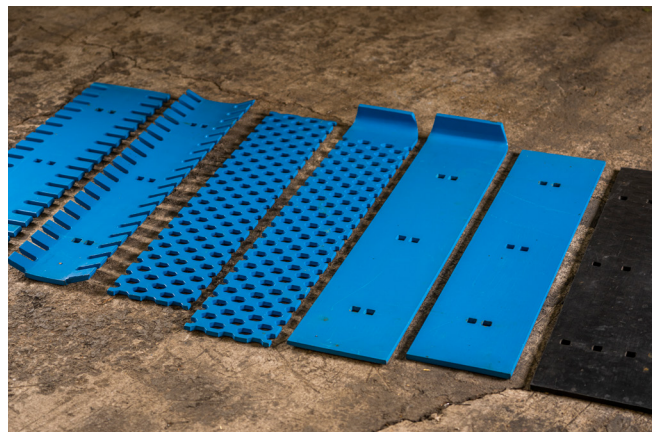




ROAD MAINTENANCE PRODUCTS

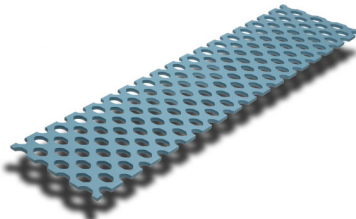
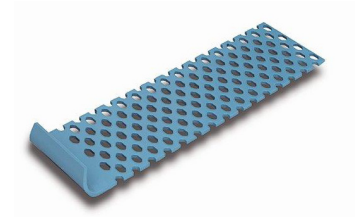
Road networks require care all year long, regardless of the weather. Our wide selection of high-quality road maintenance products covers everything from ice scrapers to summertime grading.

We offer machine parts in abrasion-resistant HB500/550 steel and hard alloy wear parts for snow plowing, scraping, and road surface maintenance and reconstruction. Products are also available in the 290 hole pattern.



ICE SCRAPER HB500

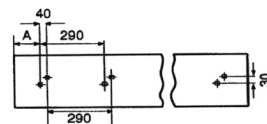
PART NUMBER	THICKNESS	HEIGHT	LENGTH	WEIGHT KG	NOTES
223010	10	180	692	6.1	
223011	10	180	792	6.9	
223012	10	180	915	8.0	
223013	10	180	1220	10.7	
223014	10	180	1525	13.4	
223015	10	180	850	7.8	returned ends
223016	10	180	980	8.9	returned ends
223017	10	180	1280	11.6	returned ends
223020	10	240	692	8.2	
223021	10	240	792	9.2	
223022	10	240	915	10.8	
223028	10	240	991	11,5	
223023	10	240	1220	14.2	
223024	10	240	1525	17.8	
223025	10	240	850	10.4	returned ends
223026	10	240	980	11.5	returned ends
223027	10	240	1280	15.5	returned ends
223030	10	240	692	9.1	rubber coated
223031	10	240	792	10.4	rubber coated
223032	10	240	915	11.9	rubber coated
223033	10	240	1220	15.8	rubber coated
223034	10	240	1525	19.9	rubber coated
223035	10	240	850		rubber/return
223036	10	240	980		rubber/return
223037	10	240	1280		rubber/return
223041	10	300	1220	17.8	
223042	10	300	1525	22.3	
223059	16	200	792		HD500
223060	16	200	915		HD500
223061	16	200	1220		HD500
223062	16	200	1525		HD500



SNOWPLOW EDGES

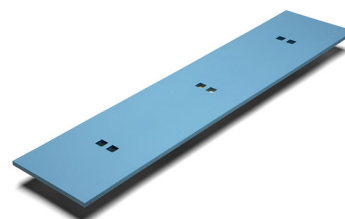
Flat edges 305mm

PART NUMBER	THICKNESS MM	HEIGHT MM	LENGHT MM	WEIGHT KG	HOLES
223220	12	200	792	15,0	3x2
223222	12	200	915	17,1	3x2
223224	12	200	1220	22,8	4x2
223226	12	200	1525	29,1	5x2
223250	16	200	1220	31,0	4x2
223251	16	200	1525	39,0	5x2



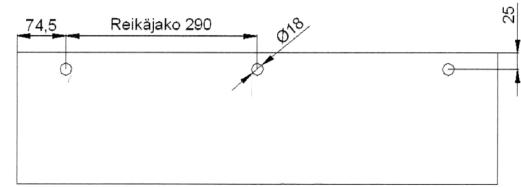
Flat edges HB500, hole spacing 290mm

PART NUMBER	THICKNESS MM	HEIGHT MM	LENGHT MM	WEIGHT KG	HOLES
224010	12	200	1698	31,0	6x2
224012	12	200	1988	37,0	7x2
224014	12	200	2440	45,0	9x2
224016	12	200	3020	56,0	11x2



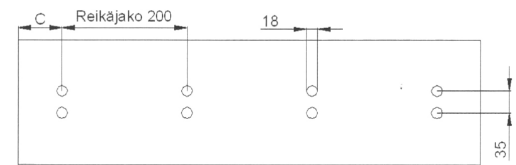
Flat edges HB500, hole spacing 290mm

PART NUMBER	THICKNESS MM	HEIGHT MM	LENGTH MM	WEIGHT KG	HOLES
223259	10	200	1740	27,0	6x1
223260	10	200	2030	31,0	7x1
223262	10	200	2320	36,0	8x1
223264	10	200	2610	40,0	9x1
223266	10	200	3190	49,0	11x1



Flat edges HB500, hole spacing 200mm

PART NUMBER	THICKNESS MM	HEIGHT MM	LENGTH MM	WEIGHT KG	HOLES
223240	10	200	1500	24.0	8x2
223242	10	200	1900	30.0	10x2
223244	10	200	2400	38.0	12x2
223246	10	200	2940	46.0	15x2



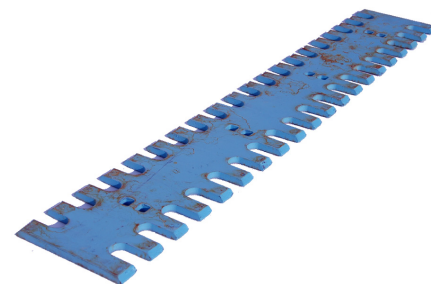
Zoom Flat edges

PART NUMBER	THICKNESS MM	HEIGHT MM	LENGTH MM	
225131	10	140	660	right
225132	10	140	660	left
225130	10	140	1273	middle
225133				end
225141	16	200	990	right
225142	16	200	990	left
225140	16	200	1950	middle
225143				end

Ice scrapers

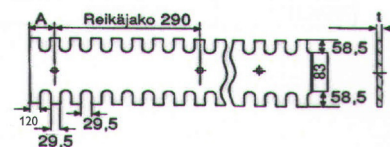
Flat ice scraper HB500 305mm

PART NUMBER	THICKNESS MM	HEIGHT MM	LENGHT MM	WEIGHT KG	HOLES	TEETH SPACE
223280	12	200	915	12	3x2	30,5mm
223282	12	200	1220	16	4x2	30,5mm
223284	12	200	1525	20	5x2	30,5mm
223286	12	220	915	15,5	3x2	16,0mm
223287	12	220	1220	18,0	4x2	16,0mm
223288	12	220	1525	22,5	5x2	16,0mm
223292	16	200	1220	21	4x1	30,5mm
223294	16	200	1525	27,5	5x1	30,5mm



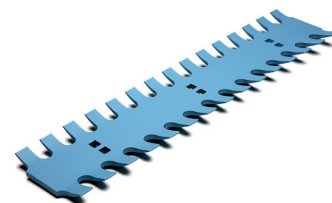
Flat ice scraper HB500 290mm

PART NUMBER	THICKNESS MM	HEIGHT MM	LENGHT MM	WEIGHT KG	HOLES	TEETH SPACE
223295	12	200	1698	22,0	6x1	30,5mm
223296	12	200	1980	27,0	7x1	30,5mm
223297	12	200	2440	33,0	9x1	30,5mm
223298	12	200	3020	41,0	11x1	30,5mm



Curved ice scraper HB500 305mm

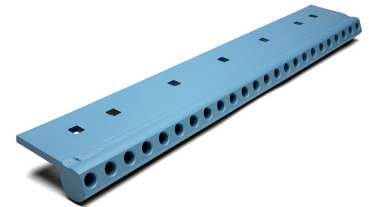
PART NUMBER	THICKNESS MM	HEIGHT MM	LENGHT MM	WEIGHT KG	HOLES	TEETH SPACE
223270	12	193	1220	16,0	4x2	16,0mm
223272	12	193	1525	20,0	5x2	16,0mm
223234	12	193	1220	16,0	4x2	30,5mm
223236	12	193	1525	20,0	5x2	30,5mm



CARBIDE EDGES, PINS AND FRAMES

Carbide plate for pins

PART NUMBER	DIMENSIONS	WEIGHT KG	NUMBER OF PINS
223305	16x130x610mm/305 25°	16	16 pins
223306	16x130x915mm/305 25°	22	24 pins
223307	16x130x1220mm/305 25°	30	32 pins
223309	16x130x610mm/305 45°	16	16 pins
223310	16x130x915mm/305 45°	22	24 pins
223320	16x130x1220mm/305 45°	30	32 pins
223330	repair part C10-HD	0,35	



Pins

PART NUMBER	MODEL	WEIGHT KG	NOTES
223341	bit square washer	0,3	wide pointed, with washer 50 pcs
223345	bit square washer	0,3	wide blunt, with washer 50 pcs
223340	bit oval washer	0,3	wide pointed, with washer 50 pcs
223342	bit oval washer	0,3	wide blunt, with washer 50 pcs
223343	milling bit W5	0,3	pointed, with washer 50 pcs
223344	milling bit W7	0,3	pointed, with washer 50 pcs
223348	milling bit K-10	0,5	



Flat carbide edges and pins

Flat carbide edges

PART NUMBER	DIMENSIONS MM	WEIGHT KG	NOTES
223252	20/13x130x792	12,5	hole spacing 305mm
223254	20/13x130x915	14	hole spacing 305mm
223256	20/13x130x1220	19	hole spacing 305mm
223257	20/13x130x1525	23,5	hole spacing 305mm



Carbide edges with teeth

PART NUMBER	DIMENSIONS MM	WEIGHT KG	NOTES
223299	20/13x130x792	11	hole spacing 305mm
223300	20/13x130x915	13	hole spacing 305mm
223302	20/13x130x1220	18	hole spacing 305mm
223304	20/13x130x1525	22,5	hole spacing 305mm

Carbide blade with teeth

PART NUMBER	MODEL	WEIGHT KG	NOTES
225300	20/13x130x792mm	11	hole spacing 305mm
223303	20/13x130x915mm	13	hole spacing 305mm
223308	20/13x130x1220mm	18	hole spacing 305mm



PLOWING AND FASTENING EQUIPMENT

Plates for snowplows

PART NUMBER	DIMENSIONS MM	WEIGHT KG	NOTES
223356	∅ 270 x 16	8	no fasteners
223358	∅ 270 x 16	8.5	fastening space 70mm

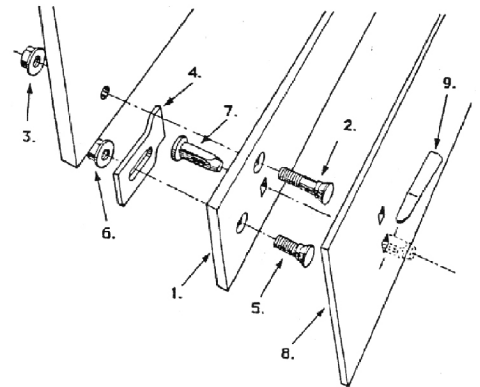


Snowplow repair part

PART NUMBER	DIMENSIONS MM	WEIGHT KG	NOTES
223360	100x16x3000	37	holes 305mm

Plates for quick mounting 305mm

PART NUMBER	THICKNESS MM	HEIGHT MM	LENGTH MM	WEIGHT KG	NOTES
223322	16	130	1817	27	reces.holes
223324	16	130	2122	32	reces.holes



Bolts and nuts

Tee head bolts

PART NUMBER	MODEL, DIMENSIONS MM	HARDNESS	LOCK
223391	KH M 16x45	12,9	16mm
223392	KH M 16x55	12,9	18mm
223394	KH M 16x55	12,9	16mm
223396	KH M 16x70	12,9	16mm



Countersunk bolts

PART NUMBER	MODEL, DIMENSIONS MM	HARDNESS	LOCK
223402	FH M 16x37	12,9	16mm
223405	FH M 16x55	12,9	16mm
223406	FH M 16x65	12,9	16mm
223408	FH M 16x80	12,9	16mm
223420	FH M 20x70	10,9	20mm
223440	FH M 24x70	10,9	24mm
223451	FH M 24x90	10,9	24mm



Nuts

PART NUMBER	MODEL	HARDNESS	PACKAGE
223289	M12 nylock	8,8	100 pc.
104930	M16 nylock	8,8	100 pc.
223291	M16 flange nut, nylock	8,8	100 pc.
223422	M20 flange, nut	8,8	100 pc.
223442	M24 nut	8,8	100 pc.



Wedgebolts, wedges and support plates

Wedgebolts

PART NUMBER	MEASURES	HARDNESS
223383	16x47	12,9
223382	16x53	12,9
223381	16x65	12,9

Wedges

PART NUMBER	DIMENSIONS MM	MODEL
223385	20,5x125	plain
223386	22,5x125	concave
223389	26,0x125	plain

Support plates

PART NUMBER	TYPE	MODEL
223430	No. 70	plain, ø 18mm
223432	No. 80	bent, ø 14mm
223434	No. 80.65	bent, 18mm slot



**WE KEEP YOUR
WORKSITE
RUNNING**

16100

1610



WORK WEARS OUT, WE RENEW.

SK Suomen
Kulutusosa

Hulikanmutka 3
37570 LEMPÄÄLÄ, FINLAND
Business ID: 2305580-5
Telephone +358 10 219 6820
suomenkulutusosa.fi

All catalog imagery is for illustration purposes only. The reference numbers indicate part compatibility and are not a suggestion that the parts are OEM products. The products are offered on a first come, first served basis, and the offering is based on current availability.